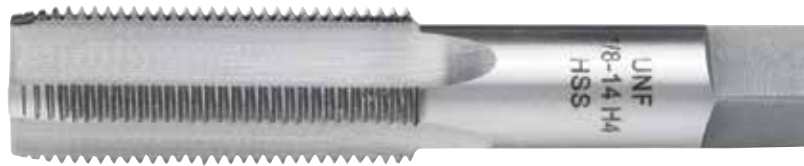


Proferred[®]

CUTTING TOOLS AND ACCESSORIES



USA Headquarters

Long Beach, California
5855 Obispo Ave., Long Beach, CA 90805
Tel. 562-808-8000
Fax: 562-808-8137
losangeles@brightonbest.com

Global Headquarters

Tainan, Taiwan
No. 122, Yi-Lin Road, Rende Township, Tainan, 71752 Taiwan
Tel. 886-6-270-1756
Fax: 886-6-270-6356
bbi-team@mail.tachen.com.tw



**BRIGHTON-BEST
INTERNATIONAL**





Black Oxide Jobbers / Wire Gauge
HSS 135° Point
PG. 6



Black Oxide Silver & Deming
Letter Drills
PG. 7



Black Oxide Stub
HSS 135° Split Point
PG. 8



Black Oxide Double End
HSS 135° Split Point
PG. 8



Black Oxide Aircraft
HSS 135° Split Point
PG. 8



Black & Gold Jobbers
Wire Gauge 135° Split Point
PG. 9



Black & Gold Silver & Deming
Letter Drills
PG. 10



Black & Gold Mechanics Length Drills
Jobber Sets
PG. 11



Cobalt Jobbers / Wire Gauge
135° Split Point
PG. 12



Cobalt Silver & Deming
118° Point
PG. 13



Cobalt Spotweld Double End
PG. 13



Cobalt Double End
PG. 13



Jobber Sets / Tap & Drill Sets
PG. 13



HSS Hand Taps
PG. 15



Carbon NPT Pipe Taps
HSS NPT Pipe Taps
PG. 16



Combo Drill & Tap
Spiral Point Gun Taps
PG. 17



T-Handle Tap Wrench
PG. 17



Bridge Reamers
Car Reamers
PG. 18



Bar Champ
PG. 19



Step Drills
HSS
PG. 20



T.C.T. Hole Cutters
Tungsten Carbide Teeth
PG. 21



Annular Cutters
HSS
PG. 22



Wire Brushes
Wire Wheels
PG. 23



Hand Wire Brush
PG. 23



Screw Extractors
PG. 23



Spade Bits
PG. 24



Spade Bit Extensions
Ship Auger Extensions
PG. 24-25



Self Feed Wood Bits
PG. 25



Ship Auger Drill Bits
PG. 26



V Groove Tile Bits
PG. 27



Slow Spiral Masonry Drill Bits
PG. 28



SDS-Plus Rotary Hammer Drill Bits
PG. 29



SDS-Plus Stop Rotary
Hammer Drill Bits
PG. 30



Concrete Screw
Installation Drill Bits
PG. 30



Concrete Screw
Installation Kit
PG. 30



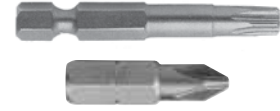
SDS-Max Rotary Hammer Drill Bits
PG. 31



Reciprocating Blades
PG. 32



Magnetic Bit Holders
PG. 32



Standard Insert Bits
PG. 33



Tamper Proof Insert Bits
PG. 34



Magnetic Nut Setters
Impact / Standard
PG. 35

HSS TOOL DATA

Suggested Drill Bits To Be used For Various Types Of Materials:

MATERIAL	DRILL STYLE	ANGLE POINT	PRESSURE TO APPLY	COOLANT OR LUBRICANT
CARBON STEEL DUCTILE STEEL BRASS BRONZE	GENERAL PURPOSE DRILLS	118° POINT	MEDIUM TO HEAVY	OIL or WATER SOLUTION
CARBON STEEL ALUMINUM AUSTENETIC STAINLESS STEEL	HEAVY DUTY AND TITANIUM	135° SPLIT POINT	MEDIUM TO HEAVY	OIL or ACTIVATED SOLUTION
STAINLESS STEEL SERIES C CAST IRON	COBALT DRILLS	135° SPLIT POINT	MEDIUM TO HEAVY	OIL or ACTIVATED SOLUTION
HARD STEEL HEAT TREATED ALLOYS	HARD BODY CARBIDE TIPPED AND COBALT	130° & 135° SPLIT POINT	HEAVY	OIL or ACTIVATED SOLUTION

Chemical Analysis Of The Three Primary High Speed Steels Used To Manufacture HSS Drill Bits:

TYPE	CHEMICAL COMPOSITION						ROCKWELL C HARDNESS	TERM
	CARBON	TUNGSTEN	MOLYBDENUM	CHROMIUM	VANADIUM	COBALT		
M2	0.85	6.00	5.00	4.00	1.90	-	63-65	HSS
M35	1.10	1.50	9.50	1.15	1.15	5.00	65-67	COBALT
M42	1.10	1.50	9.50	1.15	1.15	8.00	65-67	SUPER COBALT

M2 "HSS" is the standard material used for all BBI drill bits. M2 has good red-hardness and retains its cutting edge longer than other general purpose high speed steels because of its increased quantity of tungsten (dull red heat up to 1000° F without loss of hardness or rapid dulling of cutting edge).

M2 is generally favored for high production machine work.

M35 M35 is the standard cobalt material used for most BBI cobalt drill bits. M35 has excellent resistance to abrasion and very good red-hardness for working difficult materials.

M42 M42 "Super Cobalt" is American made premium cobalt material used for higher performance BBI cobalt drill bits. M42 has the best resistance to abrasion and red-hardness.

COBALT DRILLS

Made of the finest Cobalt steel obtainable and furnished with a 135° split point, these drills are designed for use in machining hard, tough materials beyond the normal cutting capabilities of regular high speed steel tools. These include work-hardening grades of stainless steels, titanium, high temperature alloys, and many other heat treated materials. In addition, due to their resistant properties, they can also be used at higher speeds to drill abrasive plastics, cast iron, and other types of difficult to machine work materials.

THE TITANIUM ADVANTAGE

The Titanium Nitrate coating extends the life of the twist drill by up to 4 times. Titanium drills are mostly used in production because of their extended life. The Titanium Nitrate coating acts as a THERMAL BARRIER between the high speed drill and the material being drilled. This feature improves the speed and the drilling time by 40% to 50% over a standard HSS drill bit. Titanium drills are manufactured with a 135° split point for fast penetration and accurate starting without the use of a center punch. The precision ground point, flute, body clearances, and drill diameters are especially designed for ultimate accuracy and performance.

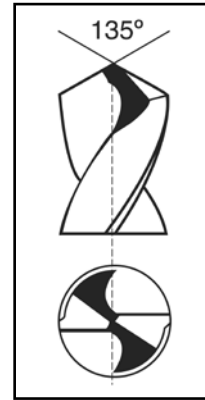
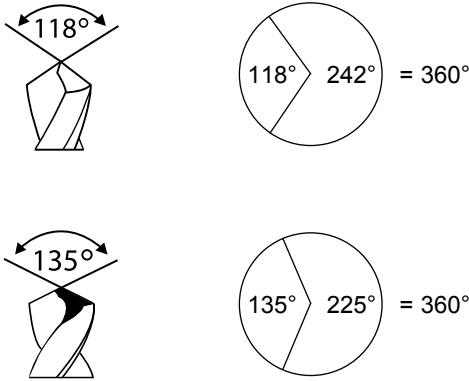


Always Use Protection When Drilling.

Always Use High RPM For Smaller Diameters and Lower RPM For Larger Diameters.

HSS TOOL DATA

Understanding High Speed Steel Drill Bits:



Split Point

An extra cutting angle on the 2 cutting edges of a drill bit.

Split Point is designated here in black.

Split Pointing is almost always reserved for 135° HSS drill bits.

118° drill bits have a sharp point and are common on standard / general purpose drill bits where light duty work is needed. Because of this sharp point, 118° drill bits will tend to “walk” or spin like a top on flat surfaces. This is why a centering drill or center punch is normally used to start off holes. If the operator has very steady hands, then the 118° drill bit can be used without center punching.

135° drill bits have a flatter point which gives the drill bit more cutting surface area. When more surface area cuts the steel, drilling is faster.



Understanding Nomenclature Vis-a-vis Size:

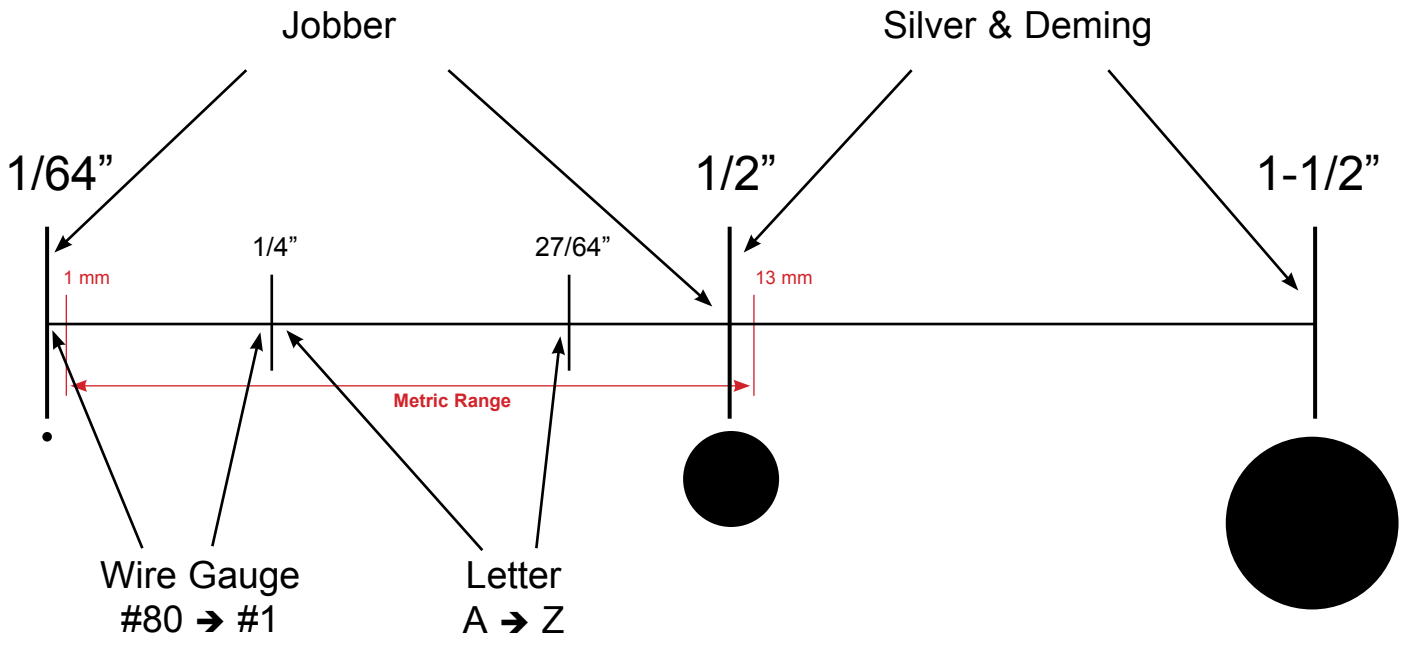


Chart Not To Scale.



Jobber Drills - HEAVY DUTY - BLACK OXIDE FINISH M2 HSS

Part #	Size	Dec.	OAL	Flute	Qty.	Part #	Size	Dec.	OAL	Flute	Qty.
C21100	1/16"	.0625	1-7/8"	7/8"	12	C21115	19/64"	.2969	4-3/8"	3-1/16"	12
C21101	5/64"	.0781	2"	1"	12	C21116	5/16"	.3125	4-1/2"	3-3/16"	12
C21102	3/32"	.0938	2-1/4"	1-1/4"	12	C21117	21/64"	.3281	4-5/8"	3-5/16"	6
C21103	7/64"	.1094	2-5/8"	1-1/2"	12	C21118	11/32"	.3438	4-3/4"	3-7/16"	6
C21104	1/8"	.1250	2-3/4"	1-5/8"	12	C21119	23/64"	.3594	4-7/8"	3-1/2"	6
C21105	9/64"	.1406	2-7/8"	1-3/4"	12	C21120	3/8"	.3750	5"	3-5/8"	6
C21106	5/32"	.1562	3-1/8"	2"	12	C21121	25/64"	.3906	5-1/8"	3-3/4"	6
C21107	11/64"	.1719	3-1/4"	2-1/8"	12	C21122	13/32"	.4062	5-1/4"	3-7/8"	6
C21108	3/16"	.1875	3-1/2"	2-5/16"	12	C21123	27/64"	.4219	5-3/8"	3-15/16"	6
C21109	13/64"	.2031	3-5/8"	2-7/16"	12	C21124	7/16"	.4375	5-1/2"	4-1/16"	6
C21110	7/32"	.2188	3-3/4"	2-1/2"	12	C21125	29/64"	.4531	5-5/8"	4-3/16"	6
C21111	15/64"	.2344	3-7/8"	2-5/8"	12	C21126	15/32"	.4688	5-3/4"	4-5/16"	6
C21112	1/4"	.2500	4"	2-3/4"	12	C21127	31/64"	.4844	5-7/8"	4-3/8"	6
C21113	17/64"	.2656	4-1/8"	2-7/8"	12	C21128	1/2"	.5000	6"	4-1/2"	6
C21114	9/32"	.2812	4-1/4"	2-15/16"	12						

- ◆ Jobber Length
- ◆ 135° Split Point
- ◆ Ground Flute
- ◆ Straight Shank
- ◆ Heavy Duty Web
- ◆ Black Oxide Finish
- ◆ M2 HSS

- Cast Iron
- Steel
- Steel Forging
- Light Gauge Stainless Steel



Wire Gauge Drills - HEAVY DUTY - BLACK OXIDE FINISH M2 HSS

Part #	Size	Dec.	OAL	Flute	Qty.	Part #	Size	Dec.	OAL	Flute	Qty.
C21150	1	.2280	3-7/8"	2-5/8"	12	C21180	31	.1200	2-3/4"	1-5/8"	12
C21151	2	.2210	3-7/8"	2-5/8"	12	C21181	32	.1160	2-3/4"	1-5/8"	12
C21152	3	.2130	3-3/4"	2-1/2"	12	C21182	33	.1130	2-5/8"	1-1/2"	12
C21153	4	.2090	3-3/4"	2-1/2"	12	C21183	34	.1110	2-5/8"	1-1/2"	12
C21154	5	.2055	3-3/4"	2-1/2"	12	C21184	35	.1100	2-5/8"	1-1/2"	12
C21155	6	.2040	3-3/4"	2-1/2"	12	C21185	36	.1065	2-1/2"	1-7/16"	12
C21156	7	.2010	3-5/8"	2-7/16"	12	C21186	37	.1040	2-1/2"	1-7/16"	12
C21157	8	.1990	3-5/8"	2-7/16"	12	C21187	38	.1015	2-1/2"	1-7/16"	12
C21158	9	.1960	3-5/8"	2-7/16"	12	C21188	39	.0995	2-3/8"	1-3/8"	12
C21159	10	.1935	3-5/8"	2-7/16"	12	C21189	40	.0980	2-3/8"	1-3/8"	12
C21160	11	.1910	3-1/2"	2-5/16"	12	C21190	41	.0960	2-3/8"	1-3/8"	12
C21161	12	.1890	3-1/2"	2-5/16"	12	C21191	42	.0935	2-1/4"	1-1/4"	12
C21162	13	.1850	3-1/2"	2-5/16"	12	C21192	43	.0890	2-1/4"	1-1/4"	12
C21163	14	.1820	3-3/8"	2-3/16"	12	C21193	44	.0860	2-1/8"	1-1/8"	12
C21164	15	.1800	3-3/8"	2-3/16"	12	C21194	45	.0820	2-1/8"	1-1/8"	12
C21165	16	.1770	3-3/8"	2-3/16"	12	C21195	46	.0810	2-1/8"	1-1/8"	12
C21166	17	.1730	3-3/8"	2-3/16"	12	C21196	47	.0785	2"	1"	12
C21167	18	.1695	3-1/4"	2-1/8"	12	C21197	48	.0760	2"	1"	12
C21168	19	.1660	3-1/4"	2-1/8"	12	C21198	49	.0730	2"	1"	12
C21169	20	.1610	3-1/4"	2-1/8"	12	C21199	50	.0700	2"	1"	12
C21170	21	.1590	3-1/4"	2-1/8"	12	C21200	51	.0670	2"	1"	12
C21171	22	.1570	3-1/8"	2"	12	C21201	52	.0635	1-7/8"	7/8"	12
C21172	23	.1540	3-1/8"	2"	12	C21202	53	.0595	1-7/8"	7/8"	12
C21173	24	.1520	3-1/8"	2"	12	C21203	54	.0550	1-7/8"	7/8"	12
C21174	25	.1495	3"	1-7/8"	12	C21204	55	.0520	1-7/8"	7/8"	12
C21175	26	.1470	3"	1-7/8"	12	C21205	56	.0465	1-3/4"	3/4"	12
C21176	27	.1440	3"	1-7/8"	12	C21206	57	.0430	1-3/4"	3/4"	12
C21177	28	.1405	2-7/8"	1-3/4"	12	C21207	58	.0420	1-5/8"	11/16"	12
C21178	29	.1360	2-7/8"	1-3/4"	12	C21208	59	.0410	1-5/8"	11/16"	12
C21179	30	.1285	2-3/4"	1-5/8"	12	C21209	60	.0400	1-5/8"	11/16"	12

- ◆ Wire Gauge
- ◆ 135° Split Point
- ◆ Ground Flute
- ◆ Straight Shank
- ◆ Heavy Duty Web
- ◆ Black Oxide Finish
- ◆ M2 HSS

- Cast Iron
- Steel
- Steel Forging
- Light Gauge Stainless Steel



NOTE:
SIZES 40 → 60
HAVE NO
SPLIT POINT.



Letter Drills - HEAVY DUTY - BLACK OXIDE FINISH M2 HSS

- ◆ Jobber Length
- ◆ 135° Split Point
- ◆ Ground Flute
- ◆ Straight Shank
- ◆ Heavy Duty Web
- ◆ Black Oxide Finish
- ◆ M2 HSS

- Cast Iron
- Steel
- Steel Forging
- Light Gauge
Stainless Steel

Part #	Size	Dec.	OAL	Flute	Qty.	Part #	Size	Dec.	OAL	Flute	Qty.
C21250	A	.2340	3-7/8"	2-5/8"	12	C21263	N	.3020	4-3/8"	3-1/16"	6
C21251	B	.2380	4"	2-3/4"	12	C21264	O	.3160	4-1/2"	3-3/16"	6
C21252	C	.2420	4"	2-3/4"	12	C21265	P	.3230	4-5/8"	3-5/16"	6
C21253	D	.2460	4"	2-3/4"	12	C21266	Q	.3320	4-3/4"	3-7/16"	6
C21254	E	.2500	4"	2-3/4"	12	C21267	R	.3390	4-3/4"	3-7/16"	6
C21255	F	.2570	4-1/8"	2-7/8"	12	C21268	S	.3480	4-7/8"	3-1/2"	6
C21256	G	.2610	4-1/8"	2-7/8"	12	C21269	T	.3580	4-7/8"	3-1/2"	6
C21257	H	.2660	4-1/8"	2-7/8"	12	C21270	U	.3680	5"	3-5/8"	6
C21258	I	.2720	4-1/8"	2-7/8"	12	C21271	V	.3770	5"	3-5/8"	6
C21259	J	.2770	4-1/8"	2-7/8"	12	C21272	W	.3860	5-1/8"	3-3/4"	6
C21260	K	.2810	4-1/4"	2-15/16"	12	C21273	X	.3970	5-1/8"	3-3/4"	6
C21261	L	.2900	4-1/4"	2-15/16"	6	C21274	Y	.4040	5-1/4"	3-7/8"	6
C21262	M	.2950	4-3/8"	3-1/16"	6	C21275	Z	.4040	5-1/4"	3-7/8"	6



Silver & Deming - 1/2" Shank - M2 HSS

- ◆ 6" Length
- ◆ 118° Point
- ◆ Ground Flute
- ◆ 1/2" Shank
- ◆ Black Oxide Finish
- ◆ M2 HSS

- Cast Iron
- Steel
- Steel Forging
- Light to Medium
Materials

Part #	Size	Dec.	OAL	Flute	Qty.	Part #	Size	Dec.	OAL	Flute	Qty.
C21300	33/64"	.5156	6"	2-3/4"	1	C21320	53/64"	.8281	6"	2-3/4"	1
C21301	17/32"	.5312	6"	2-3/4"	1	C21321	27/32"	.8438	6"	2-3/4"	1
C21302	35/64"	.5469	6"	2-3/4"	1	C21322	55/64"	.8594	6"	2-3/4"	1
C21303	9/16"	.5625	6"	2-3/4"	1	C21323	7/8"	.8750	6"	2-3/4"	1
C21304	37/64"	.5781	6"	2-3/4"	1	C21324	57/64"	.8906	6"	2-3/4"	1
C21305	19/32"	.5938	6"	2-3/4"	1	C21325	29/32"	.9062	6"	2-3/4"	1
C21306	39/64"	.6094	6"	2-3/4"	1	C21326	59/64"	.9219	6"	2-3/4"	1
C21307	5/8"	.6250	6"	2-3/4"	1	C21327	15/16"	.9375	6"	2-3/4"	1
C21308	41/64"	.6406	6"	2-3/4"	1	C21328	61/64"	.9531	6"	2-3/4"	1
C21309	21/32"	.6562	6"	2-3/4"	1	C21329	31/32"	.9688	6"	2-3/4"	1
C21310	43/64"	.6719	6"	2-3/4"	1	C21330	63/64"	.9844	6"	2-3/4"	1
C21311	11/16"	.6875	6"	2-3/4"	1	C21331	1"	1.0000	6"	2-3/4"	1
C21312	45/64"	.7031	6"	2-3/4"	1	C21332	1-1/16"	1.0625	6"	2-3/4"	1
C21313	23/32"	.7188	6"	2-3/4"	1	C21333	1-1/8"	1.1250	6"	2-3/4"	1
C21314	47/64"	.7344	6"	2-3/4"	1	C21334	1-3/16"	1.1875	6"	2-3/4"	1
C21315	3/4"	.7500	6"	2-3/4"	1	C21335	1-1/4"	1.2500	6"	2-3/4"	1
C21316	49/64"	.7656	6"	2-3/4"	1	C21336	1-5/16"	1.3125	6"	2-3/4"	1
C21317	25/32"	.7812	6"	2-3/4"	1	C21337	1-3/8"	1.3750	6"	2-3/4"	1
C21318	51/64"	.7969	6"	2-3/4"	1	C21338	1-1/2"	1.5000	6"	2-3/4"	1
C21319	13/16"	.8125	6"	2-3/4"	1						



- ◆ Stub Length
- ◆ 135° Split Point
- ◆ Ground Flute
- ◆ Straight Shank
- ◆ Heavy Duty Web
- ◆ Black Oxide Finish
- ◆ M2 HSS



- **Cast Iron**
- **Steel**
- **Steel Forging**
- **Stainless Steel**
- **Sheet Metal**
- **Automotive**



STUB Fractional - HEAVY DUTY

Part #	Size	Dec.	OAL	Flute	Qty.
C21350	1/16"	.0625	1-5/8"	5/8"	12
C21351	5/64"	.0781	1-11/16"	11/16"	12
C21352	3/32"	.0938	1-3/4"	3/4"	12
C21353	7/64"	.1094	1-13/16"	13/16"	12
C21354	1/8"	.1250	1-7/8"	7/8"	12
C21355	9/64"	.1406	1-15/16"	15/16"	12
C21356	5/32"	.1562	2-1/16"	1"	12
C21357	11/64"	.1719	2-1/8"	1-1/16"	12
C21358	3/16"	.1875	2-3/16"	1-1/8"	12
C21359	13/64"	.2031	2-1/4"	1-3/16"	12
C21360	7/32"	.2188	2-3/8"	1-1/4"	12
C21361	15/64"	.2344	2-7/16"	1-5/16"	12
C21362	1/4"	.2500	2-1/2"	1-3/8"	12
C21363	17/64"	.2656	2-5/8"	1-7/16"	12
C21364	9/32"	.2812	2-11/16"	1-1/2"	12
C21365	19/64"	.2969	2-3/4"	1-9/16"	12
C21366	5/16"	.3125	2-13/16"	1-5/8"	12
C21367	21/64"	.3281	2-15/16"	1-11/16"	6
C21368	11/32"	.3438	3"	1-11/16"	6
C21369	23/64"	.3594	3-1/16"	1-3/4"	6
C21370	3/8"	.3750	3-1/8"	1-13/16"	6
C21371	25/64"	.3906	3-1/4"	1-7/8"	6
C21372	13/32"	.4062	3-5/16"	1-15/16"	6
C21373	27/64"	.4219	3-3/8"	2"	6
C21374	7/16"	.4375	3-7/16"	2-1/16"	6
C21375	29/64"	.4531	3-9/16"	2-1/8"	6
C21376	15/32"	.4688	3-5/8"	2-1/8"	6
C21377	31/64"	.4844	3-11/16"	2-3/16"	6
C21378	1/2"	.5000	3-3/4"	2-1/4"	6



Double End - M2 HSS BLACK

Part #	Size	Dec.	OAL	Flute	Qty.
C21450	1/8"	.1250	2"	1/2"	12
C21451	#30	.1285	2"	1/2"	12

- ◆ Heavy Duty
- ◆ 135° Split Point
- ◆ M2 HSS
- ◆ Bright and Black Finish



- **Sheet Metal**
- **Automotive**



- ◆ Straight Shank
- ◆ 135° Split Point
- ◆ Ground Flute
- ◆ Extra Flexibility
- ◆ Heavy Duty Web
- ◆ Black Oxide Finish
- ◆ M2 HSS



- **Steel**
- **Medium Alloys**

6" Aircraft - M2 HSS

Part #	Size	Dec.	OAL	Flute	Qty.
C21400	1/16"	.0625	6"	7/8"	6
C21401	1/8"	.1250	6"	1-5/8"	6
C21402	9/64"	.1406	6"	1-3/4"	6
C21403	5/32"	.1562	6"	2"	6
C21404	11/64"	.1719	6"	2-1/8"	6
C21405	3/16"	.1875	6"	2-5/16"	6
C21406	13/64"	.2031	6"	2-7/16"	6
C21407	7/32"	.2188	6"	2-1/2"	6
C21408	15/64"	.2344	6"	2-5/8"	6
C21409	1/4"	.2500	6"	2-3/4"	6
C21410	17/64"	.2656	6"	2-7/8"	6
C21411	9/32"	.2812	6"	2-15/16"	6
C21412	5/16"	.3125	6"	3-3/16"	1
C21413	11/32"	.3438	6"	3-7/16"	1
C21414	3/8"	.3750	6"	3-5/8"	1
C21415	7/16"	.4375	6"	4-1/16"	1
C21416	1/2"	.5000	6"	4-1/2"	1

12" Aircraft - M2 HSS

Part #	Size	Dec.	OAL	Flute	Qty.
C21417	1/8"	.1250	12"	1-5/8"	1
C21418	5/32"	.1562	12"	2"	1
C21419	3/16"	.1875	12"	2-5/16"	1
C21420	7/32"	.2188	12"	2-1/2"	1
C21421	1/4"	.2500	12"	2-3/4"	1
C21422	9/32"	.2812	12"	2-15/16"	1
C21423	5/16"	.3125	12"	3-3/16"	1
C21424	11/32"	.3438	12"	3-7/16"	1
C21425	3/8"	.3750	12"	3-5/8"	1
C21426*	7/16"	.4375	12"	4-1/16"	1
C21427*	1/2"	.5000	12"	4-1/2"	1

* 3/8" Shank



**135°
SPLIT
POINT**

Black & Gold

- ◆ Jobber Length
- ◆ 135° Split Point
- ◆ Ground Flute
- ◆ Straight Shank
- ◆ Heavy Duty Web
- ◆ Black & Gold Finish
- ◆ M2 HSS

- Cast Iron
- Steel
- Steel Forging
- Stainless Steel



Black & Gold Jobber Drills - HEAVY DUTY - M2 HSS

Part #	Size	Dec.	OAL	Flute	Qty.	Part #	Size	Dec.	OAL	Flute	Qty.
C26100	1/16"	.0625	1-7/8"	7/8"	12	C26115	19/64"	.2969	4-3/8"	3-1/16"	12
C26101	5/64"	.0781	2"	1"	12	C26116	5/16"	.3125	4-1/2"	3-3/16"	12
C26102	3/32"	.0938	2-1/4"	1-1/4"	12	C26117	21/64"	.3281	4-5/8"	3-5/16"	6
C26103	7/64"	.1094	2-5/8"	1-1/2"	12	C26118	11/32"	.3438	4-3/4"	3-7/16"	6
C26104	1/8"	.1250	2-3/4"	1-5/8"	12	C26119	23/64"	.3594	4-7/8"	3-1/2"	6
C26105	9/64"	.1406	2-7/8"	1-3/4"	12	C26120	3/8"	.3750	5"	3-5/8"	6
C26106	5/32"	.1562	3-1/8"	2"	12	C26121	25/64"	.3906	5-1/8"	3-3/4"	6
C26107	11/64"	.1719	3-1/4"	2-1/8"	12	C26122	13/32"	.4062	5-1/4"	3-7/8"	6
C26108	3/16"	.1875	3-1/2"	2-5/16"	12	C26123	27/64"	.4219	5-3/8"	3-15/16"	6
C26109	13/64"	.2031	3-5/8"	2-7/16"	12	C26124	7/16"	.4375	5-1/2"	4-1/16"	6
C26110	7/32"	.2188	3-3/4"	2-1/2"	12	C26125	29/64"	.4531	5-5/8"	4-3/16"	6
C26111	15/64"	.2344	3-7/8"	2-5/8"	12	C26126	15/32"	.4688	5-3/4"	4-5/16"	6
C26112	1/4"	.2500	4"	2-3/4"	12	C26127	31/64"	.4844	5-7/8"	4-3/8"	6
C26113	17/64"	.2656	4-1/8"	2-7/8"	12	C26128	1/2"	.5000	6"	4-1/2"	6
C26114	9/32"	.2812	4-1/4"	2-15/16"	12						

Black & Gold Wire Gauge Drills - HEAVY DUTY - M2 HSS

Part #	Size	Dec.	OAL	Flute	Qty.	Part #	Size	Dec.	OAL	Flute	Qty.
C26150	1	.2280	3-7/8"	2-5/8"	12	C26180	31	.1200	2-3/4"	1-5/8"	12
C26151	2	.2210	3-7/8"	2-5/8"	12	C26181	32	.1160	2-3/4"	1-5/8"	12
C26152	3	.2130	3-3/4"	2-1/2"	12	C26182	33	.1130	2-5/8"	1-1/2"	12
C26153	4	.2090	3-3/4"	2-1/2"	12	C26183	34	.1110	2-5/8"	1-1/2"	12
C26154	5	.2055	3-3/4"	2-1/2"	12	C26184	35	.1100	2-5/8"	1-1/2"	12
C26155	6	.2040	3-3/4"	2-1/2"	12	C26185	36	.1065	2-1/2"	1-7/16"	12
C26156	7	.2010	3-5/8"	2-7/16"	12	C26186	37	.1040	2-1/2"	1-7/16"	12
C26157	8	.1990	3-5/8"	2-7/16"	12	C26187	38	.1015	2-1/2"	1-7/16"	12
C26158	9	.1960	3-5/8"	2-7/16"	12	C26188	39	.0995	2-3/8"	1-3/8"	12
C26159	10	.1935	3-5/8"	2-7/16"	12	C26189	40	.0980	2-3/8"	1-3/8"	12
C26160	11	.1910	3-1/2"	2-5/16"	12	C26190	41	.0960	2-3/8"	1-3/8"	12
C26161	12	.1890	3-1/2"	2-5/16"	12	C26191	42	.0935	2-1/4"	1-1/4"	12
C26162	13	.1850	3-1/2"	2-5/16"	12	C26192	43	.0890	2-1/4"	1-1/4"	12
C26163	14	.1820	3-3/8"	2-3/16"	12	C26193	44	.0860	2-1/8"	1-1/8"	12
C26164	15	.1800	3-3/8"	2-3/16"	12	C26194	45	.0820	2-1/8"	1-1/8"	12
C26165	16	.1770	3-3/8"	2-3/16"	12	C26195	46	.0810	2-1/8"	1-1/8"	12
C26166	17	.1730	3-3/8"	2-3/16"	12	C26196	47	.0785	2"	1"	12
C26167	18	.1695	3-1/4"	2-1/8"	12	C26197	48	.0760	2"	1"	12
C26168	19	.1660	3-1/4"	2-1/8"	12	C26198	49	.0730	2"	1"	12
C26169	20	.1610	3-1/4"	2-1/8"	12	C26199	50	.0700	2"	1"	12
C26170	21	.1590	3-1/4"	2-1/8"	12	C26200	51	.0670	2"	1"	12
C26171	22	.1570	3-1/8"	2"	12	C26201	52	.0635	1-7/8"	7/8"	12
C26172	23	.1540	3-1/8"	2"	12	C26202	53	.0595	1-7/8"	7/8"	12
C26173	24	.1520	3-1/8"	2"	12	C26203	54	.0550	1-7/8"	7/8"	12
C26174	25	.1495	3"	1-7/8"	12	C26204	55	.0520	1-7/8"	7/8"	12
C26175	26	.1470	3"	1-7/8"	12	C26205	56	.0465	1-3/4"	3/4"	12
C26176	27	.1440	3"	1-7/8"	12	C26206	57	.0430	1-3/4"	3/4"	12
C26177	28	.1405	2-7/8"	1-3/4"	12	C26207	58	.0420	1-5/8"	11/16"	12
C26178	29	.1360	2-7/8"	1-3/4"	12	C26208	59	.0410	1-5/8"	11/16"	12
C26179	30	.1285	2-3/4"	1-5/8"	12	C26209	60	.0400	1-5/8"	11/16"	12



NOTE:
SIZES 40 → 60
HAVE NO
SPLIT POINT.



Black & Gold

- ◆ Jobber Length
- ◆ 135° Split Point
- ◆ Ground Flute
- ◆ Straight Shank
- ◆ Heavy Duty Web
- ◆ Black & Gold Finish
- ◆ M2 HSS

- Cast Iron
- Steel
- Steel Forging
- Stainless Steel

Black & Gold Letter Drills - HEAVY DUTY - M2 HSS

Part #	Size	Dec.	OAL	Flute	Qty.	Part #	Size	Dec.	OAL	Flute	Qty.
C26250	A	.2340	3-7/8"	2-5/8"	12	C26263	N	.3020	4-3/8"	3-1/16"	6
C26251	B	.2380	4"	2-3/4"	12	C26264	O	.3160	4-1/2"	3-3/16"	6
C26252	C	.2420	4"	2-3/4"	12	C26265	P	.3230	4-5/8"	3-5/16"	6
C26253	D	.2460	4"	2-3/4"	12	C26266	Q	.3320	4-3/4"	3-7/16"	6
C26254	E	.2500	4"	2-3/4"	12	C26267	R	.3390	4-3/4"	3-7/16"	6
C26255	F	.2570	4-1/8"	2-7/8"	12	C26268	S	.3480	4-7/8"	3-1/2"	6
C26256	G	.2610	4-1/8"	2-7/8"	12	C26269	T	.3580	4-7/8"	3-1/2"	6
C26257	H	.2660	4-1/8"	2-7/8"	12	C26270	U	.3680	5"	3-5/8"	6
C26258	I	.2720	4-1/8"	2-7/8"	12	C26271	V	.3770	5"	3-5/8"	6
C26259	J	.2770	4-1/8"	2-7/8"	12	C26272	W	.3860	5-1/8"	3-3/4"	6
C26260	K	.2810	4-1/4"	2-15/16"	12	C26273	X	.3970	5-1/8"	3-3/4"	6
C26261	L	.2900	4-1/4"	2-15/16"	6	C26274	Y	.4040	5-1/4"	3-7/8"	6
C26262	M	.2950	4-3/8"	3-1/16"	6	C26275	Z	.4040	5-1/4"	3-7/8"	6



Black & Gold

- ◆ 6" Length
- ◆ 118° Split Point
- ◆ Ground Flute
- ◆ 3-Flat 1/2" Shank
- ◆ Heavy Duty Web
- ◆ Black & Gold Finish
- ◆ M2 HSS

- Cast Iron
- Steel
- Steel Forging
- Stainless Steel

Black & Gold Silver & Deming - 1/2" Shank - M2 HSS

Part #	Size	Dec.	OAL	Flute	Qty.	Part #	Size	Dec.	OAL	Flute	Qty.
C26300	33/64"	.5156	6"	2-3/4"	1	C26318	51/64"	.7969	6"	2-3/4"	1
C26301	17/32"	.5312	6"	2-3/4"	1	C26319	13/16"	.8125	6"	2-3/4"	1
C26302	35/64"	.5469	6"	2-3/4"	1	C26320	53/64"	.8281	6"	2-3/4"	1
C26303	9/16"	.5625	6"	2-3/4"	1	C26321	27/32"	.8438	6"	2-3/4"	1
C26304	37/64"	.5781	6"	2-3/4"	1	C26322	55/64"	.8594	6"	2-3/4"	1
C26305	19/32"	.5938	6"	2-3/4"	1	C26323	7/8"	.8750	6"	2-3/4"	1
C26306	39/64"	.6094	6"	2-3/4"	1	C26324	57/64"	.8906	6"	2-3/4"	1
C26307	5/8"	.6250	6"	2-3/4"	1	C26325	29/32"	.9062	6"	2-3/4"	1
C26308	41/64"	.6406	6"	2-3/4"	1	C26326	59/64"	.9219	6"	2-3/4"	1
C26309	21/32"	.6562	6"	2-3/4"	1	C26327	15/16"	.9375	6"	2-3/4"	1
C26310	43/64"	.6719	6"	2-3/4"	1	C26328	61/64"	.9531	6"	2-3/4"	1
C26311	11/16"	.6875	6"	2-3/4"	1	C26329	31/32"	.9688	6"	2-3/4"	1
C26312	45/64"	.7031	6"	2-3/4"	1	C26330	63/64"	.9844	6"	2-3/4"	1
C26313	23/32"	.7188	6"	2-3/4"	1	C26331	1"	1.0000	6"	2-3/4"	1
C26314	47/64"	.7344	6"	2-3/4"	1	C26332	1-1/16"	1.0625	6"	2-3/4"	1
C26315	3/4"	.7500	6"	2-3/4"	1	C26333	1-1/8"	1.1250	6"	2-3/4"	1
C26316	49/64"	.7656	6"	2-3/4"	1	C26334	1-3/16"	1.1875	6"	2-3/4"	1
C26317	25/32"	.7812	6"	2-3/4"	1	C26335	1-1/4"	1.2500	6"	2-3/4"	1

Made In



Black & Gold

- ◆ Mechanics Length
- ◆ 135° Split Point
- ◆ 3-Flat Shank (3/16" → 1/2")
- ◆ Black & Gold Finish
- ◆ Heavy Duty Web for Strength & Rigidity
- ◆ M2 HSS

- Cast Iron
- Steel
- Steel Forging
- Stainless Steel

Black & Gold Mechanics Length Drills - HEAVY DUTY - M2 HSS

Part #	Size	Dec.	OAL	Flute	Qty.	Part #	Size	Dec.	OAL	Flute	Qty.
C26350	1/16"	.0625	1-7/8"	7/8"	12	C26365	19/64"	.2969	3-7/8"	2-3/8"	12
C26351	5/64"	.0781	2"	1"	12	C26366	5/16"	.3125	4"	2-1/2"	12
C26352	3/32"	.0938	2-1/4"	1-1/4"	12	C26367	21/64"	.3281	4-1/16"	2-9/16"	6
C26353	7/64"	.1094	2-3/8"	1-5/16"	12	C26368	11/32"	.3438	4-1/8"	2-5/8"	6
C26354	1/8"	.1250	2-1/2"	1-7/16"	12	C26369	23/64"	.3594	4-3/16"	2-11/16"	6
C26355	9/64"	.1406	2-5/8"	1-9/16"	12	C26370	3/8"	.3750	4-1/4"	2-11/16"	6
C26356	5/32"	.1562	2-3/4"	1-11/16"	12	C26371	25/64"	.3906	4-5/16"	2-3/4"	6
C26357	11/64"	.1719	2-7/8"	1-13/16"	12	C26372	13/32"	.4062	4-3/8"	2-13/16"	6
C26358	3/16"	.1875	3"	1-7/8"	12	C26373	27/64"	.4219	4-7/16"	2-7/8"	6
C26359	13/64"	.2031	3-1/8"	1-15/16"	12	C26374	7/16"	.4375	4-1/2"	2-15/16"	6
C26360	7/32"	.2188	3-1/4"	2"	12	C26375	29/64"	.4531	4-5/8"	3"	6
C26361	15/64"	.2344	3-3/8"	2"	12	C26376	15/32"	.4688	4-3/4"	3-1/8"	6
C26362	1/4"	.2500	3-1/2"	2"	12	C26377	31/64"	.4844	4-7/8"	3-1/4"	6
C26363	17/64"	.2656	3-5/8"	2-1/8"	12	C26378	1/2"	.5000	5"	3-3/8"	6
C26364	9/32"	.2812	3-3/4"	2-1/4"	12						

29 PC Jobber Drill Sets

Part #	Set	Sizes	Type	Point	Qty.
C20300	29 pc	1/16" → 1/2" x 64ths	MECHANICS B & G**	135° S.P.	1
C20400	29 pc	1/16" → 1/2" x 64ths	BLACK & GOLD	135° S.P.	1

** MADE IN U.S.A.





Cobalt Jobber Drills - HEAVY DUTY - M35 COBALT

Part #	Size	Dec.	OAL	Flute	Qty.	Part #	Size	Dec.	OAL	Flute	Qty.
C22004	1/16"	.0625	1-7/8"	7/8"	12	C22019	19/64"	.2969	4-3/8"	3-1/16"	12
C22005	5/64"	.0781	2"	1"	12	C22020	5/16"	.3125	4-1/2"	3-3/16"	12
C22006	3/32"	.0938	2-1/4"	1-1/4"	12	C22021	21/64"	.3281	4-5/8"	3-5/16"	6
C22007	7/64"	.1094	2-5/8"	1-1/2"	12	C22022	11/32"	.3438	4-3/4"	3-7/16"	6
C22008	1/8"	.1250	2-3/4"	1-5/8"	12	C22023	23/64"	.3594	4-7/8"	3-1/2"	6
C22009	9/64"	.1406	2-7/8"	1-3/4"	12	C22024	3/8"	.3750	5"	3-5/8"	6
C22010	5/32"	.1562	3-1/8"	2"	12	C22025	25/64"	.3906	5-1/8"	3-3/4"	6
C22011	11/64"	.1719	3-1/4"	2-1/8"	12	C22026	13/32"	.4062	5-1/4"	3-7/8"	6
C22012	3/16"	.1875	3-1/2"	2-5/16"	12	C22027	27/64"	.4219	5-3/8"	3-15/16"	6
C22013	13/64"	.2031	3-5/8"	2-7/16"	12	C22028	7/16"	.4375	5-1/2"	4-1/16"	6
C22014	7/32"	.2188	3-3/4"	2-1/2"	12	C22029	29/64"	.4531	5-5/8"	4-3/16"	6
C22015	15/64"	.2344	3-7/8"	2-5/8"	12	C22030	15/32"	.4688	5-3/4"	4-5/16"	6
C22016	1/4"	.2500	4"	2-3/4"	12	C22031	31/64"	.4844	5-7/8"	4-3/8"	6
C22017	17/64"	.2656	4-1/8"	2-7/8"	12	C22032	1/2"	.5000	6"	4-1/2"	6
C22018	9/32"	.2812	4-1/4"	2-15/16"	12						

- ◆ Jobber Length
- ◆ 135° Split Point
- ◆ Ground Flute
- ◆ Straight Shank
- ◆ Heavy Duty Web
- ◆ Gold Finish
- ◆ M35 Cobalt

- Hardened Steel
- Stainless Steel
- High Temp Alloys
- Heat Treated Materials
- Abrasive Plastics

Cobalt Wire Gauge Drills - HEAVY DUTY - M35 COBALT

Part #	Size	Dec.	OAL	Flute	Qty.	Part #	Size	Dec.	OAL	Flute	Qty.
C22150	1	.2280	3-7/8"	2-5/8"	12	C22180	31	.1200	2-3/4"	1-5/8"	12
C22151	2	.2210	3-7/8"	2-5/8"	12	C22181	32	.1160	2-3/4"	1-5/8"	12
C22152	3	.2130	3-3/4"	2-1/2"	12	C22182	33	.1130	2-5/8"	1-1/2"	12
C22153	4	.2090	3-3/4"	2-1/2"	12	C22183	34	.1110	2-5/8"	1-1/2"	12
C22154	5	.2055	3-3/4"	2-1/2"	12	C22184	35	.1100	2-5/8"	1-1/2"	12
C22155	6	.2040	3-3/4"	2-1/2"	12	C22185	36	.1065	2-1/2"	1-7/16"	12
C22156	7	.2010	3-5/8"	2-7/16"	12	C22186	37	.1040	2-1/2"	1-7/16"	12
C22157	8	.1990	3-5/8"	2-7/16"	12	C22187	38	.1015	2-1/2"	1-7/16"	12
C22158	9	.1960	3-5/8"	2-7/16"	12	C22188	39	.0995	2-3/8"	1-3/8"	12
C22159	10	.1935	3-5/8"	2-7/16"	12	C22189	40	.0980	2-3/8"	1-3/8"	12
C22160	11	.1910	3-1/2"	2-5/16"	12	C22190	41	.0960	2-3/8"	1-3/8"	12
C22161	12	.1890	3-1/2"	2-5/16"	12	C22191	42	.0935	2-1/4"	1-1/4"	12
C22162	13	.1850	3-1/2"	2-5/16"	12	C22192	43	.0890	2-1/4"	1-1/4"	12
C22163	14	.1820	3-3/8"	2-3/16"	12	C22193	44	.0860	2-1/8"	1-1/8"	12
C22164	15	.1800	3-3/8"	2-3/16"	12	C22194	45	.0820	2-1/8"	1-1/8"	12
C22165	16	.1770	3-3/8"	2-3/16"	12	C22195	46	.0810	2-1/8"	1-1/8"	12
C22166	17	.1730	3-3/8"	2-3/16"	12	C22196	47	.0785	2"	1"	12
C22167	18	.1695	3-1/4"	2-1/8"	12	C22197	48	.0760	2"	1"	12
C22168	19	.1660	3-1/4"	2-1/8"	12	C22198	49	.0730	2"	1"	12
C22169	20	.1610	3-1/4"	2-1/8"	12	C22199	50	.0700	2"	1"	12
C22170	21	.1590	3-1/4"	2-1/8"	12	C22200	51	.0670	2"	1"	12
C22171	22	.1570	3-1/8"	2"	12	C22201	52	.0635	1-7/8"	7/8"	12
C22172	23	.1540	3-1/8"	2"	12	C22202	53	.0595	1-7/8"	7/8"	12
C22173	24	.1520	3-1/8"	2"	12	C22203	54	.0550	1-7/8"	7/8"	12
C22174	25	.1495	3"	1-7/8"	12	C22204	55	.0520	1-7/8"	7/8"	12
C22175	26	.1470	3"	1-7/8"	12	C22205	56	.0465	1-3/4"	3/4"	12
C22176	27	.1440	3"	1-7/8"	12	C22206	57	.0430	1-3/4"	3/4"	12
C22177	28	.1405	2-7/8"	1-3/4"	12	C22207	58	.0420	1-5/8"	11/16"	12
C22178	29	.1360	2-7/8"	1-3/4"	12	C22208	59	.0410	1-5/8"	11/16"	12
C22179	30	.1285	2-3/4"	1-5/8"	12	C22209	60	.0400	1-5/8"	11/16"	12



NOTE:
SIZES 40 → 60
HAVE NO
SPLIT POINT.



- ◆ 6" Length
- ◆ 118° Split Point
- ◆ Ground Flute
- ◆ 3-Flat Round 1/2" Shank
- ◆ Gold Finish
- ◆ M35 Cobalt

- Cast Iron
- Steel
- Steel Forging
- Stainless Steel

Cobalt Silver & Deming - 1/2" Shank - M35 COBALT

Part #	Size	Dec.	OAL	Flute	Qty.	Part #	Size	Dec.	OAL	Flute	Qty.
C22301	17/32"	.5312	6"	2-3/4"	1	C22325	29/32"	.9062	6"	2-3/4"	1
C22303	9/16"	.5625	6"	2-3/4"	1	C22327	15/16"	.9375	6"	2-3/4"	1
C22305	19/32"	.5938	6"	2-3/4"	1	C22329	31/32"	.9688	6"	2-3/4"	1
C22307	5/8"	.6250	6"	2-3/4"	1	C22331	1"	1.0000	6"	2-3/4"	1
C22309	21/32"	.6562	6"	2-3/4"	1	C22332	1-1/16"	1.0625	6"	2-3/4"	1
C22311	11/16"	.6875	6"	2-3/4"	1	C22333	1-1/8"	1.1250	6"	2-3/4"	1
C22313	23/32"	.7188	6"	2-3/4"	1	C22334	1-3/16"	1.1875	6"	2-3/4"	1
C22315	3/4"	.7500	6"	2-3/4"	1	C22335	1-1/4"	1.2500	6"	2-3/4"	1
C22317	25/32"	.7812	6"	2-3/4"	1	C22336	1-5/16"	1.3125	6"	2-3/4"	1
C22319	13/16"	.8125	6"	2-3/4"	1	C22337	1-3/8"	1.3750	6"	2-3/4"	1
C22321	27/32"	.8438	6"	2-3/4"	1	C22338	1-1/2"	1.5000	6"	2-3/4"	1
C22323	7/8"	.8750	6"	2-3/4"	1						



Spotweld - Double End - M42 COBALT

Part #	Size	Frac.	OAL	Qty.
C24100	6.5 mm	1/4"	3-5/8"	5
C24101	8.0 mm	5/16"	3-5/8"	5
C24102	10.0 mm	3/8"	3-5/8"	5

Double End - M42 COBALT

Part #	Size	Dec.	OAL	Flute	Qty.
C23450	1/8"	.1250	2"	1/2"	12
C23451	#30	.1285	2"	1/2"	12

- ◆ Heavy Duty Spur
- ◆ M42 Super Cobalt
- ◆ High Red Hot Hardness
- ◆ Double End
- ◆ Gold Finish



29 PC Jobber Drill Sets

Part #	Set	Sizes	Type	Point	Qty.
C20100	29 pc	1/16" → 1/2" x 64ths	BLACK OXIDE	135° S.P.	1
C20200	29 pc	1/16" → 1/2" x 64ths	COBALT	135° S.P.	1



TAP & DRILL Sets - CARBON / HSS TAPS

Part #	Sizes	Type	Point	Qty.
C40100	See Below	Carbon Taps	118°	1
C40200	See Below	HSS Taps	135° S.P.	1

HSS DRILL BIT SIZES: #36, #29, #25, #21, #7, F, 5/16", U, 27/64"
 TAP SIZES: 6-32, 8-32, 10-24, 10-32, 1/4"-20, 5/16"-18, 3/8"-16, 7/16"-14, 1/2"-13

TAP AND DRILL CHART

NC = National Course
NF = National Fine

DRILL THIS SIZE HOLE			TO TAP FOR THIS BOLT OR SCREW
DECIMAL INCHES	DRILL SIZE	NEAREST FRACTION	
.0469"	3/64"	3/64"	0-80 NF
.0595"	No. 53	none	1-64 NC
.0595"	No. 53	1/16"	1-72 NF
.0700"	No. 50	none	2-56 NC
.0700"	No. 50	none	2-64 NF
.0785"	No. 47	5/64"	3-48 NC
.0820"	No. 45	none	3-56 NF
.0860"	No. 44	none	4-36 NS
.0890"	No. 43	3/32"	4-40 NC
.0935"	No. 42	3/32"	4-48 NF
.0984"	2.5mm	none	3mm-0.60mm
.1015"	No. 38	none	1/8-40 NS
.1015"	No. 38	none	5-40 NC
.1040"	No. 37	none	5-44 NF
.1100"	No. 35	7/64"	6-32 NC
.1110"	No. 34	none	6-36 NS
.1130"	No. 33	none	6-40 NF
.1200"	No. 31	none	6-48 NS
.1338"	3.4mm	none	4mm-0.70mm
.1338"	3.4mm	none	4mm-0.75mm
.1360"	No. 29	none	8-32 NC
.1360"	No. 29	9/64"	8-36 NF
.1405"	No. 28	none	8-40 NS
.1470"	No. 26	none	3/16-24 NS
.1495"	No. 25	5/32"	10-24 NC
.1570"	No. 22	none	3/16-32 NS
.1590"	No. 21	5/32"	10-32 NF
.1653"	4.2mm	none	5mm-0.90mm
.1693"	4.3mm	none	5mm-0.80mm
.1770"	No. 16	11/64"	12-24 NC
.1820"	No. 14	3/16"	12-28 NF
.1850"	No. 13	none	12-32 NEF
.1935"	No. 10	none	14-20 NS
.2010"	No. 7	13/64"	1/4-20 NC
.2010"	No. 7	none	14-24 NS
.2047"	5.2mm	none	6mm-1.00mm
.2090"	No. 4	none	1/4-24 NS
.2130"	No. 3	7/32"	1/4-28 NF
.2188"	7/32"	7/32"	1/4-32 NEF
.2280"	No. 1	none	1/4-40 NS
.2401"	6.1mm	15/64"	7mm-1.00mm
.2570"	Ltr. F	17/64"	5/16-18 NC
.2716"	6.9mm	17/64"	8mm-1.25mm
.2720"	Ltr. I	none	5/16-24 NF
.2795"	7.1mm	none	8mm-1.00mm
.2812"	9/32"	9/32"	5/16-32 NEF
.3110"	7.9mm	none	9mm-1.25mm
.3125"	5/16"	5/16"	3/8-16 NC

DRILL THIS SIZE HOLE			TO TAP FOR THIS BOLT OR SCREW
DECIMAL INCHES	DRILL SIZE	NEAREST FRACTION	
.3189"	8.1mm	none	9mm-1.00mm
.3268"	8.3mm	none	9mm-0.75mm
.3320"	Ltr. Q	21/64"	3/8-24 NF
.3425"	8.7mm	none	10mm-1.50mm
.3503"	8.9mm	11/32"	10mm-1.25mm
.3583"	9.1mm	none	*10mm-1.00mm
.3680"	Ltr. U	23/64"	7/16"-14 NC
.3818"	9.7mm	none	11mm-1.50mm
.3906"	25/64"	25/64"	7/16-20 NF
.4133"	10.5mm	none	12mm-1.75mm
.4212"	10.7mm	27/64"	12mm-1.50mm
.4219"	27/64"	27/64"	1/2-13 NC
.4291"	10.9mm	27/64"	*12mm-1.25mm
.4531"	29/64"	29/64"	1/2-20 NF
.4531"	29/64"	29/64"	1/2-24 NS
.4803"	12.2mm	none	14mm-2.00mm
.4844"	31/64"	31/64"	9/16-12 NC
.4999"	12.7mm	none	14mm-1.50mm
.5039"	12.8mm	none	*14mm-1.25mm
.5156"	33/64"	33/64"	9/16-18 NF
.5312"	17/32"	17/32"	5/8-11 NC
.5590"	14.2mm	35/64"	16mm-2.00mm
.5781"	37/64"	37/64"	5/8-18 NF
.5787"	14.7mm	none	16mm-1.50mm
.5938"	19/32"	19/32"	11/16-11 NS
.6220"	15.8mm	39/64"	18mm-2.50mm
.6250"	5/8"	5/8"	11/16-16 NS
.6562"	21/32"	21/32"	3/4-10 NC
.6614"	16.8mm	none	*18mm-1.50mm
.6875"	11/16"	11/16"	3/4-16 NF
.7008"	17.8mm	11/16"	20mm-2.50mm
.7656"	49/64"	49/64"	7/8-9 NC
.8125"	13/16"	13/16"	7/8-14 NF
.8228"	20.9mm	none	22mm-1.50mm
.8281"	53/64"	53/64"	*7/8-18 NS
.8425"	21.4mm	53/64"	24mm-3.00mm
.8750"	7/8"	7/8"	1-8 NC
.8779"	22.3mm	none	24mm-2.00mm
.9219"	59/64"	59/64"	1-12 NF
.9375"	15/16"	15/16"	1-14 NS
.9844"	63/64"	63/64"	1-1/8 - 7 NC
1.0469"	1-3/64"	1-3/64"	1-1/8 - 12 NF
1.1094"	1-7/64"	1-7/64"	1-1/4 - 7 NC
1.1719"	1-11/64"	1-11/64"	1-1/4 - 12 NF
1.2188"	1-7/32"	1-7/32"	1-3/8 - 6 NC
1.2969"	1-19/64"	1-19/64"	1-3/8 - 12 NF
1.3468"	1-11/32"	1-11/32"	1-1/2 - 6 NC
1.4219"	1-27/64"	1-27/64"	1-1/2 - 12 NF

* Spark Plug Taps.



(HSS) High Speed Steel Hand Taps - MACHINE SCREW GROUND THREAD

Part #	Description	Machine Screw Thread	No. Of Flutes	Ground Thread Limit	OAL	Use Thread Length	Drill Size	Qty.
C42100	PLUG TAP	4-40 NC	3	H2	1-7/8"	9/16"	43	5
C42101	PLUG TAP	4-48 NF	3	H2	1-7/8"	9/16"	42	5
C42102	PLUG TAP	5-40 NC	3	H2	1-15/16"	7/8"	38	5
C42103	PLUG TAP	5-44 NF	3	H2	1-15/16"	7/8"	37	5
C42104	PLUG TAP	6-32 NC	3	H2	2"	11/16"	35	5
C42105	PLUG TAP	6-40 NF	3	H2	2"	11/16"	33	5
C42106	PLUG TAP	8-32 NC	4	H3	2-1/8"	3/4"	29	5
C42107	PLUG TAP	8-36 NF	4	H3	2-1/8"	3/4"	29	5
C42108	PLUG TAP	10-24 NC	4	H3	2-3/8"	7/8"	25	5
C42109	PLUG TAP	10-32 NF	4	H3	2-3/8"	7/8"	21	5
C42110	PLUG TAP	12-24 NC	4	H3	2-3/8"	15/16"	16	5
C42111	PLUG TAP	12-28 NF	4	H3	2-3/8"	15/16"	14	5



(HSS) High Speed Steel Hand Taps - FRACTIONAL GROUND THREAD

Part #	Description	Machine Screw Thread	No. Of Flutes	Ground Thread Limit	OAL	Use Thread Length	Drill Size	Qty.
C42112	PLUG TAP	1/4"-20 NC	4	H3	2-1/2"	1"	7	5
C42113	PLUG TAP	1/4"-28 NF	4	H3	2-1/2"	1"	3	5
C42114	PLUG TAP	5/16"-18 NC	4	H3	2-23/32"	1-1/8"	F	5
C42115	PLUG TAP	5/16"-24 NF	4	H3	2-23/32"	1-1/8"	I	5
C42116	PLUG TAP	3/8"-16 NC	4	H3	2-15/16"	1-1/4"	5/16"	5
C42117	PLUG TAP	3/8"-24 NF	4	H3	2-15/16"	1-1/4"	Q	5
C42118	PLUG TAP	7/16"-14 NC	4	H3	3-5/32"	1-7/16"	U	5
C42119	PLUG TAP	7/16"-20 NF	4	H3	3-5/32"	1-7/16"	25/64"	5
C42120	PLUG TAP	1/2"-13 NC	4	H3	3-3/8"	1-21/32"	27/64"	5
C42121	PLUG TAP	1/2"-20 NF	4	H3	3-3/8"	1-21/32"	29/64"	5
C42122	PLUG TAP	9/16"-12 NC	4	H3	3-19/32"	1-21/32"	31/64"	1
C42123	PLUG TAP	9/16"-18 NF	4	H3	3-19/32"	1-21/32"	33/64"	1
C42124	PLUG TAP	5/8"-11 NC	4	H3	3-13/16"	1-13/16"	17/32"	1
C42125	PLUG TAP	5/8"-18 NF	4	H3	3-13/16"	1-13/16"	37/64"	1
C42126	PLUG TAP	11/16"-11 NS	4	H3	4-1/32"	1-13/16"	19/32"	1
C42127	PLUG TAP	11/16"-16 NS	4	H3	4-1/32"	1-13/16"	5/8"	1
C42128	PLUG TAP	3/4"-10 NC	4	H3	4-1/4"	2"	21/32"	1
C42129	PLUG TAP	3/4"-16 NF	4	H3	4-1/4"	2"	11/16"	1
C42130	PLUG TAP	7/8"-9 NC	4	H4	4-11/16"	2-7/32"	49/64"	1
C42131	PLUG TAP	7/8"-14 NF	4	H4	4-11/16"	2-7/32"	13/16"	1
C42132	PLUG TAP	1"-8 NC	4	H4	5-1/8"	2-1/2"	7/8"	1
C42133	PLUG TAP	1"-12 NF	4	H4	5-1/8"	2-1/2"	59/64"	1
C42134	PLUG TAP	1"-14 NS	4	H4	5-1/8"	2-1/2"	15/16"	1

5 PCS. PER
PACK FROM
4-40 TO
1/2"-20.

SOLD
1 PC.
OVER 1/2"-20.

(Carbon Steel) NPT Taper Pipe Taps

Part #	Size	Threads Per Inch NPT Only	No. Of Flutes	OAL	Thread Length	Qty.
C43100	1/16"	27	4	2-1/8"	11/16"	1
C43101	1/8"	27	4	2-1/8"	3/4"	1
C43102	1/4"	18	4	2-7/16"	1-1/16"	1
C43103	3/8"	18	4	2-9/16"	1-1/16"	1
C43104	1/2"	14	4	3-1/8"	1-3/8"	1
C43105	3/4"	14	5	3-1/4"	1-3/8"	1
C43106	1"	11.5"	5	3-3/4"	1-3/4"	1
C43107	1-1/4"	11.5"	5	4"	1-3/4"	1
C43108	1-1/2"	11.5"	7	4-1/4"	1-3/4"	1
C43109	2"	11.5"	7	4-1/2"	1-3/4"	1

- ◆ National Pipe Tap
- ◆ Carbon Steel
- ◆ Ground Thread
- ◆ General Purpose



**SOLD INDIVIDUALLY
IN PLASTIC TUBES**

(HSS) NPT Taper Pipe Taps

Part #	Size	Threads Per Inch NPT Only	No. Of Flutes	OAL	Thread Length	Qty.
C44100	1/16"	27	4	2-1/8"	11/16"	1
C44101	1/8"	27	4	2-1/8"	3/4"	1
C44102	1/4"	18	4	2-7/16"	1-1/16"	1
C44103	3/8"	18	4	2-9/16"	1-1/16"	1
C44104	1/2"	14	4	3-1/8"	1-3/8"	1
C44105	3/4"	14	5	3-1/4"	1-3/8"	1
C44106	1"	11.5	5	3-3/4"	1-3/4"	1
C44107	1-1/4"	11.5	5	4"	1-3/4"	1
C44108	1-1/2"	11.5	7	4-1/4"	1-3/4"	1
C44109	2"	11.5	7	4-1/2"	1-3/4"	1

- ◆ National Pipe Tap
- ◆ High Speed Steel
- ◆ Ground Thread
- ◆ Heavy Duty



**SOLD INDIVIDUALLY
IN PLASTIC TUBES**

NPT TAP-DRILL CHART



DRILL THIS SIZE HOLE			TO TAP FOR THIS BOLT OR SCREW
DECIMAL INCHES	DRILL SIZE	NEAREST FRACTION	
.3390"	Ltr. R	none	1/8-27 NPT
.4375"	7/16"	7/16"	1/4-18 NPT
.5781"	37/64"	37/64"	3/8- 8 NPT
.7031"	45/64"	45/64"	1/2-14 NPT
.9219"	59/64"	59/64"	3/4-14 NPT
1.1562"	1-5/32"	1-5/32"	1 - 11-1/2 NPT
1.5000"	1-1/2"	1-1/2"	1-1/4 - 11-1/2 NPT
1.7344"	1-47/64"	1-47/64"	1-1/2 - 11-1/2 NPT
2.2188"	2-3/16"	2-3/16"	2 - 11-1/2 NPT



- ◆ High Speed Steel
- ◆ Ground Thread
- ◆ Heavy Duty

Drill and Tap holes in one operation, saving a complete set-up!

**SOLD INDIVIDUALLY
IN PLASTIC TUBES**

Combo Drill Taps - HSS

Part #	Thread Size	Drill Size	Thread Length	OAL	Qty.
C45100	6-32	0.1095	11/16"	2"	1
C45101	8-32	0.1360	3/4"	2-1/8"	1
C45102	8-36	0.1360	3/4"	2-1/8"	1
C45103	10-24	0.1520	7/8"	2-3/8"	1
C45104	10-32	0.1520	7/8"	2-3/8"	1
C45105	12-24	0.1770	15/16"	2-3/8"	1
C45106	1/4"-20	0.2010	15/16"	2-1/2"	1
C45107	1/4"-28	0.2010	15/16"	2-1/2"	1
C45108	5/16"-18	0.2570	1-1/8"	3"	1
C45109	3/8"-16	0.3125	1-1/4"	3-1/2"	1
C45110	3/8"-24	0.3125	1-1/4"	3-1/2"	1
C45111	7/16"-14	0.3680	1-7/16"	3-7/8"	1
C45112	1/2"-13	0.4250	1-21/32"	4-1/4"	1



- ◆ High Speed Steel
- ◆ Ground Thread
- ◆ Heavy Duty

Spiral Point Taps are ideal for machine tapping through holes or blind holes with adequate bottom clearance.



**Sold
5/Pack**

Spiral Point (Gun) Taps - HSS

Part #	Size	No. Of Flutes	OAL	Thread Length	Drill Size	Qty.
C46100	6-32	2	2"	11/16"	35	5
C46101	8-32	2	2-1/8"	3/4"	29	5
C46102	10-24	2	2-3/8"	7/8"	25	5
C46103	10-32	2	2-3/8"	7/8"	25	5
C46104	12-24	2	2-3/8"	15/16"	16	5
C46105	1/4"-20	2	2-1/2"	1"	7	5
C46106	1/4"-28	2	2-1/2"	1"	7	5
C46107	5/16"-18	2	2-23/32"	1-1/8"	F	5
C46108	3/8"-16	3	2-15/16"	1-1/4"	5/16"	5
C46109	1/2"-13	3	3-3/8"	1-21/32"	27/64"	5



T-Handle Tap Wrench

Part #	O.D. Size	Qty.
C47100	#0 - 1/4"	1
C47200	#10 - 1/2"	1

Reaming Steel For Aligning Existing Holes & Bolt / Rivet Installation



3-FLAT SHANK

**BLACK
Oxide**

Reamer - CAR / Construction - Standard - HSS

Part #	Size	Point Diameter	OAL	Flute	Shank	Type	Qty.
C34100	3/8"	0.250	5"	4"	3/8"	3-Flat Car / Constr.	1
C34101	7/16"	0.281	5-1/4"	4"	7/16"	3-Flat Car / Constr.	1
C34102	1/2"	0.343	6"	4-1/2"	1/2"	3-Flat Car / Constr.	1
C34103	9/16"	0.343	6-1/4"	4-1/2"	1/2"	3-Flat Car / Constr.	1
C34104	5/8"	0.343	6-1/2"	4-1/2"	1/2"	3-Flat Car / Constr.	1
C34105	11/16"	0.375	7"	4-1/2"	1/2"	3-Flat Car / Constr.	1
C34106	3/4"	0.406	7-1/4"	5"	1/2"	3-Flat Car / Constr.	1
C34107	13/16"	0.468	7-1/4"	5"	1/2"	3-Flat Car / Constr.	1
C34108	7/8"	0.500	7-1/4"	5"	1/2"	3-Flat Car / Constr.	1
C34109	15/16"	0.585	7-1/4"	5"	1/2"	3-Flat Car / Constr.	1
C34110	1"	0.594	7-1/4"	5"	1/2"	3-Flat Car / Constr.	1
C34111	1-1/16"	0.807	7-1/4"	5"	1/2"	3-Flat Car / Constr.	1

- ◆ High Speed Steel (HSS)
- ◆ Tapered Point
- ◆ Left-Hand Spiral
- ◆ Right-Hand Cut
- ◆ 3-Flat Shank



**BLACK
Oxide**

Reamer - CAR - Standard - HEX - HSS

Part #	Size	Point Diameter	OAL	Flute	Shank	Type	Qty.
C34200	11/16"	0.375	6-3/8"	4-1/2"	1-1/16"	HEX Car	1
C34201	13/16"	0.468	7"	5"	1-1/4"	HEX Car	1
C34202	15/16"	0.585	7"	5"	1-7/16"	HEX Car	1
C34203	1-1/16"	0.807	7"	5"	1-5/8"	HEX Car	1

- ◆ High Speed Steel (HSS)
- ◆ Tapered Point
- ◆ Left-Hand Spiral
- ◆ Right-Hand Cut
- ◆ HEX Nut Shank



**BLACK
Oxide**

Reamer - BRIDGE - SPIRAL FLUTE - HEX - HSS

Part #	Size	Point Diameter	OAL	Flute	Shank	Type	Qty.
C34300	11/16"	0.375	6-3/8"	4-1/2"	1-1/16"	HEX Car	1
C34301	13/16"	0.468	7"	5"	1-1/4"	HEX Car	1
C34302	15/16"	0.585	7"	5"	1-7/16"	HEX Car	1
C34303	1-1/16"	0.807	7"	5"	1-5/8"	HEX Car	1

- ◆ High Speed Steel (HSS)
- ◆ Tapered Point
- ◆ Left-Hand Spiral
- ◆ Right-Hand Cut
- ◆ HEX Nut Shank

Proferred® **BAR CHAMP**™

CUTTING TOOLS



- ◆ 3 HSS Cutting Blades
- ◆ Fits 1/8"-3/4" Stock
- ◆ 1/4" Hex Power Groove Shank
- ◆ Retail Packaging



- Steel
- Stainless Steel
- Copper
- Brass
- Wood
- Fiberglass
- Plastic



Bar Champ - Outer Reamer

Part #	Description	Drilling	Qty.	List
C34500	Bar / Bolt Outer Reamer	1/8"-3/4"	1	\$35.50



For Use With:

- Threaded Rod
- Round Stock
- Bar Stock
- Rebar
- Bolts





1/8"
5/32"
3/16"
7/32"
1/4"
9/32"
5/16"
11/32"
3/8"
13/32"
7/16"
15/32"
1/2"

Part# C25100
13 Steps 1/8" - 1/2"



3/16"
1/4"
5/16"
3/8"
7/16"
1/2"

Part# C25101
6 Steps 3/16" - 1/2"



1/4"
5/16"
3/8"
7/16"
1/2"
9/16"
5/8"
11/16"
3/4"

Part# C25102
9 Steps 1/4" - 3/4"

- ◆ HSS Step Drills
- ◆ Lobbed Non-Slip Shank
- ◆ Drill 1/8" Thick
- ◆ Double Flute
- ◆ Bright Finish

- Ferrous & Non-Ferrous Sheet Metals
- Plastic Laminates
- Sink Grade Stainless Steel
- Auto Body Repair
- Electrical
- HVAC



3/16"
1/4"
5/16"
3/8"
7/16"
1/2"
9/16"
5/8"
11/16"
3/4"
13/16"
7/8"

Part# C25103
12 Steps 3/16" - 7/8"



7/16"
1/2"
9/16"
5/8"
11/16"
3/4"
13/16"
7/8"
15/16"
1"
1-1/16"
1-1/8"

Part# C25104
12 Steps 7/16" - 1-1/8"



3/4"
13/16"
7/8"
15/16"
1"
1-1/16"
1-1/8"
1-3/16"
1-1/4"
1-5/16"
1-3/8"

Part# C25105
11 Steps 3/4" - 1-3/8"

STEP DRILLS
ARE SOLD
INDIVIDUALLY.



3/8"
7/16"
3/4"

For drilling
3 standard
size holes to
accommodate
drive screws
for knockout
punches.

Part# C25106
3 Steps 3/8" - 3/4"



7/8"
1-1/8"

7/8" hole
for 1/2"
conduit.

1-1/8" hole
for 3/4"
conduit.

Part# C25107
2 Steps 7/8" - 1-1/8"



7/8"
1-1/8"
1-7/32"
1-1/4"
1-3/8"

1-7/32" hole
for oil tight
switches.

Part# C25108
5 Steps 7/8" - 1-3/8"

Recommended Cutting Speeds:

1/8" - 3/8".....	1200RPM
3/8" - 1/2".....	600 RPM
1/2" - 5/8".....	400 RPM
5/8" - 3/4".....	350 RPM
3/4" - 7/8".....	300 RPM
1".....	260 RPM
1-1/8".....	240 RPM
1-1/2".....	200 RPM



7/8"

Part# C25109
1 Cone 7/8"

More accurate control of hole size in various sheet materials up to 1/8" thick. Each step bit drills a range of sizes. The further the bit advances, the larger the diameter of the hole gets. Because step drill bits enter the material one step at a time, the operator can drill the desired hole by counting the individual steps, or by using a washer as a simple stop. The self starting tip eliminates the need for pilot holes. Applications include junction boxes, switch boxes, metal studs, electrical applications, lighting fixtures, auto body work, and many other uses.



3/16" Cutting Depth



1-3/8" Cutting Depth

T.C.T. Hole Cutter

Part #	Size	Cut	Shank	Qty.
C32100	5/8"	3/16"	3/8"	1
C32101	11/16"	3/16"	3/8"	1
C32102	3/4"	3/16"	3/8"	1
C32103	13/16"	3/16"	3/8"	1
C32104	7/8"	3/16"	3/8"	1
C32105	15/16"	3/16"	3/8"	1
C32106	1"	3/16"	3/8"	1
C32107	1-1/16"	3/16"	3/8"	1
C32108	1-1/8"	3/16"	3/8"	1
C32109	1-1/4"	3/16"	3/8"	1
C32110	1-3/8"	3/16"	3/8"	1
C32111	1-1/2"	3/16"	3/8"	1
C32112	1-5/8"	3/16"	3/8"	1
C32113	1-3/4"	3/16"	3/8"	1
C32114	1-7/8"	3/16"	3/8"	1
C32115	2"	3/16"	3/8"	1
C32116	2-1/8"	3/16"	3/8"	1
C32117	2-1/4"	3/16"	3/8"	1
C32118	2-3/8"	3/16"	3/8"	1
C32119	2-1/2"	3/16"	1/2"	1
C32120	2-3/4"	3/16"	1/2"	1
C32121	3"	3/16"	1/2"	1
C32122	3-1/4"	3/16"	1/2"	1
C32123	3-1/2"	3/16"	1/2"	1
C32124	3-5/8"	3/16"	1/2"	1
C32125	4"	3/16"	1/2"	1

T.C.T. Hole Cutter

Part #	Size	Cut	Shank	Qty.
C32200	9/16"	1-3/8"	1/2"	1
C32201	5/8"	1-3/8"	1/2"	1
C32202	11/16"	1-3/8"	1/2"	1
C32203	3/4"	1-3/8"	1/2"	1
C32204	13/16"	1-3/8"	1/2"	1
C32205	7/8"	1-3/8"	1/2"	1
C32206	15/16"	1-3/8"	1/2"	1
C32207	1"	1-3/8"	1/2"	1
C32208	1-1/16"	1-3/8"	1/2"	1
C32209	1-1/8"	1-3/8"	1/2"	1
C32210	1-3/16"	1-3/8"	1/2"	1
C32211	1-1/4"	1-3/8"	1/2"	1
C32212	1-3/8"	1-3/8"	1/2"	1
C32213	1-1/2"	1-3/8"	1/2"	1
C32214	1-5/8"	1-3/8"	1/2"	1
C32215	1-3/4"	1-3/8"	1/2"	1
C32216	1-7/8"	1-3/8"	1/2"	1
C32217	2"	1-3/8"	1/2"	1
C32218	2-1/8"	1-3/8"	1/2"	1
C32219	2-1/4"	1-3/8"	1/2"	1
C32220	2-3/8"	1-3/8"	1/2"	1
C32221	2-1/2"	1-3/8"	1/2"	1

- ◆ Excellent Wear and Heat Resistance
- ◆ Tungsten Carbide Teeth
- ◆ Cuts Stainless Steel and Tough Alloys
- ◆ Ejects the Slug Saving Time
- ◆ Works in 3/8" & 1/2" Chucks

- Sheet Metal
- Steel Plate
- Stainless Steel
- Copper
- Cast Iron



T.C.T. HOLE CUTTERS ARE SOLD INDIVIDUALLY.



Replacement Parts

Part #	Description	Qty.
C33100	CENTER DRILL φ6mm x 50L	1
C33101	SPRING 1.2MM X 16L	1
C33200	CENTER DRILL φ6mm x 75L	1
C33201	SPRING 1.2MM X 50L	1

RECOMMENDED CUTTING SPEEDS

Size	Steel (rpm)	Stainless Steel (rpm)
9/16" to 13/16"	700-1000	300-700
7/8" to 1-3/16"	500-800	200-450
1-1/4" to 1-9/16"	300-600	175-315
1-5/8" to 2"	200-500	120-225
2-1/16" to 2-3/8"	200-400	95-195
2-7/16" to 3"	150-300	80-150
3-1/16" to 5"	100-200	60-120



1" Cutting
Depth



2" Cutting
Depth

1" HSS Annular Cutter

Part #	Size	x	Depth	Qty.
C30100	7/16"	X	1"	1
C30101	1/2"	X	1"	1
C30102	9/16"	X	1"	1
C30103	5/8"	X	1"	1
C30104	11/16"	X	1"	1
C30105	3/4"	X	1"	1
C30106	13/16"	X	1"	1
C30107	7/8"	X	1"	1
C30108	15/16"	X	1"	1
C30109	1"	X	1"	1
C30110	1-1/16"	X	1"	1
C30111	1-1/8"	X	1"	1
C30112	1-3/16"	X	1"	1
C30113	1-1/4"	X	1"	1
C30114	1-5/16"	X	1"	1
C30115	1-3/8"	X	1"	1
C30116	1-7/16"	X	1"	1
C30117	1-1/2"	X	1"	1
C30118	1-9/16"	X	1"	1
C30119	1-5/8"	X	1"	1
C30120	1-11/16"	X	1"	1
C30121	1-3/4"	X	1"	1
C30122	1-13/16"	X	1"	1
C30123	1-7/8"	X	1"	1
C30124	1-15/16"	X	1"	1
C30125	2"	X	1"	1
C30126	2-1/16"	X	1"	1

2" HSS Annular Cutter

Part #	Size	x	Depth	Qty.
C30200	7/16"	X	2"	1
C30201	1/2"	X	2"	1
C30202	9/16"	X	2"	1
C30203	5/8"	X	2"	1
C30204	11/16"	X	2"	1
C30205	3/4"	X	2"	1
C30206	13/16"	X	2"	1
C30207	7/8"	X	2"	1
C30208	15/16"	X	2"	1
C30209	1"	X	2"	1
C30210	1-1/16"	X	2"	1
C30211	1-1/8"	X	2"	1
C30212	1-3/16"	X	2"	1
C30213	1-1/4"	X	2"	1
C30214	1-5/16"	X	2"	1
C30215	1-3/8"	X	2"	1
C30216	1-7/16"	X	2"	1
C30217	1-1/2"	X	2"	1
C30218	1-9/16"	X	2"	1
C30219	1-5/8"	X	2"	1
C30220	1-11/16"	X	2"	1
C30221	1-3/4"	X	2"	1
C30222	1-13/16"	X	2"	1
C30223	1-7/8"	X	2"	1
C30224	1-15/16"	X	2"	1
C30225	2"	X	2"	1
C30226	2-1/16"	X	2"	1

- ◆ M2 HSS
- ◆ 3/4" Weldon Shanks
- ◆ Aggressive Cutting Edges
- ◆ No Center Punch Required
- ◆ Cut up to 2"
- ◆ For All Magnetic Drills

- Steel
- Stainless Steel
- Castings



Allows overlap cut on existing holes



Pilot Pins

Part #	Description	Qty.
C31101	Pilot 1" Cutter	1
C31102	Pilot 2" Cutter	1



Industrial Wire Cups

Part #	Size	Description	Wire Type	Qty.
C38100	2-3/4"	Knotted Cup	.020 Carbon Steel	1
C39100	2-3/4"	Knotted Cup	.020 Stainless Steel	1
C38101	4"	Knotted Cup	.020 Carbon Steel	1
C38102	6"	Knotted Cup	.020 Carbon Steel	1
C38110	3"	Crimped Cup	.014 Carbon Steel	1
C38111	4"	Crimped Cup	.014 Carbon Steel	1

- ◆ Individually Blister Packaged
- ◆ Industrial Quality

- **Stainless Steel**
- **Ferrous Metals**
- **Non-Ferrous Metals**

◆ 5/8" - 11 SPINDLE

Industrial Wire Wheels

Part #	Size	Description	Wire Type	Qty.
C38120	4"	Twist Knot Wheel	.020 Carbon Steel	1
C38130	4"	Stringer Bead Wheel	.020 Carbon Steel	1
C39130	4"	Stringer Bead Wheel	.020 Stainless Steel	1
C38131	7"	Stringer Bead Wheel	.020 Carbon Steel	1
C38140	12"	Walk Behind Wire Brush	.020 Carbon Steel (1" Spindle)	1



Hand Wire Brush

Part #	Description	Material	Qty.
C38150	Hand Wire Brush	Carbon Steel	1



Part# C35100
6 PC. Screw Extractor Set

#1, #2, #3, #4, #5, #6



Screw Extractor - LEFT HAND SPIRAL FLUTE

Part #	Size	Shank Diameter	Removes Screws or Pipe	Qty.	
C36100	1	5/64"	3/32" to 5/32"	1	
C36101	2	7/64"	5/32" to 7/32"	1	
C36102	3	5/32"	7/32" to 9/32"	1	
C36103	4	1/4"	9/32" to 3/8"	1/8" Pipe	1
C36104	5	19/64"	3/8" to 5/8"	1/4" Pipe	1
C36105	6	13/32"	5/8" to 7/8"	3/8" Pipe	1
C36106	7	17/32"	7/8" to 1-1/8"	1/2" Pipe	1
C36107	8	13/16"	1-1/8" to 1-3/8"	3/4" Pipe	1
C36108	9	1-1/16"	1-3/8" to 2"	1" Pipe	1

6" Long Spade Wood Drill

Part #	Size	OAL	Qty.
C51100	1/4"	6"	1
C51101	5/16"	6"	1
C51102	3/8"	6"	1
C51103	7/16"	6"	1
C51104	1/2"	6"	1
C51105	9/16"	6"	1
C51106	5/8"	6"	1
C51107	11/16"	6"	1
C51108	3/4"	6"	1
C51109	13/16"	6"	1
C51110	7/8"	6"	1
C51111	15/16"	6"	1
C51112	1"	6"	1
C51113	1-1/8"	6"	1
C51114	1-1/4"	6"	1
C51115	1-3/8"	6"	1
C51116	1-1/2"	6"	1



Part# C50100
6 Pc. Spade Bit Set

3/8" - 1/2" - 5/8"
3/4" - 7/8" - 1"



- ◆ Cold Forged
- ◆ Full Length Treated
- ◆ Machine Finish Cutting Groove
- ◆ Rust Protection
- ◆ Wing Tip Design
- ◆ 1/4" Hex Power Groove Shank
- ◆ Individually Stamped With Size
- ◆ Industrial Quality

- Wood
- Drywall
- Plywood

ALL SPADE POINT POWER DRILL BITS ARE SOLD INDIVIDUALLY. 1 PER POUCH.



1/4" Hex Power Groove Shank



Extension - For Spade Bit

Part #	Size	For Shank	Ø	Qty.
C53100	1/4" x 12"	1/4"	5/8"	1
C53101	1/4" x 18"	1/4"	5/8"	1

1/4" Extensions - Drill Diameter Must Be Larger Than 5/8".

Quick Insert / Quick Spring Out Chuck Extensions. SOLD INDIVIDUALLY.

- ◆ Quick-Change
- ◆ 1 PC. Construction
- ◆ 1/4" Hex Power Groove Shank
- ◆ Industrial Quality



1/4" Hex Power Groove Shank



- ◆ Fast Continuous and Self Feeding
- ◆ Deep Holes
- ◆ 7/16" Impact Hex Shank
- ◆ Double End Screw
- ◆ Extra Screw & Wrench
- ◆ Industrial Quality

- **Wood**
- **Drywall**
- **Plywood**
- **Plumbing**
- **Rough-in Work**

SELF FEED WOOD DRILLS ARE SOLD INDIVIDUALLY. 1 PER TUBE.

Self Feed (Multispur) Wood Drill

Part #	Size	MM	Pipe Entrance	Tubing Entrance	Cutting Flute	Shank	Qty.
C52100	1"	25.4	1/2"	7/8"	1"	7/16"	1
C52101	1-1/8"	28.6	1/2"	1"	1"	7/16"	1
C52102	1-1/4"	31.8	3/4"	1-1/8"	1"	7/16"	1
C52103	1-3/8"	34.9	1"	1-1/4"	1"	7/16"	1
C52104	1-1/2"	38.1	1"	1-3/8"	1"	7/16"	1
C52105	1-3/4"	44.5	1-1/4"	1-1/2"	1"	7/16"	1
C52106	2"	50.8	1-1/2"	1-7/8"	1"	7/16"	1
C52107	2-1/8"	54.0	1-1/2"	2"	1"	7/16"	1
C52108	2-1/4"	57.2	1-1/2"	2-1/8"	1"	7/16"	1
C52109	2-9/16"	65.1	2"	2-1/2"	1"	7/16"	1
C52110	3"	76.2	2-1/2"	2-7/8"	2"	7/16"	1
C52111	3-5/8"	92.1	3"	3-1/2"	2"	7/16"	1
C52112	4-5/8"	117.5	4"	4-1/2"	2"	7/16"	1



Extensions for Ship Auger & Multispur

POWER BIT EXTENSIONS

- ◆ HEX Wrench Included
- ◆ 2 Set Screws

Part #	Size	For Shank	Ø	Qty.	Part #	Size	For Shank	Ø	Qty.
C53200	5/16" x 18"	5/16"	11/16"	1	C53300	7/16" x 12"	7/16"	7/8"	1
					C53301	7/16" x 18"	7/16"	7/8"	1

5/16" Extensions - Drill Diameter Must Be Larger Than 11/16".
7/16" Extensions - Drill Diameter Must Be Larger Than 7/8".



8" Long Ship Auger Wood Drill

Part #	Size	Size In 16ths	OAL	Hex Shank	Qty.
C55100	1/2"	8	8"	5/16"	1
C55101	9/16"	9	8"	5/16"	1
C55102	5/8"	10	8"	5/16"	1
C55103	11/16"	11	8"	5/16"	1
C55104	3/4"	12	8"	5/16"	1
C55105	13/16"	13	8"	5/16"	1
C55106	7/8"	14	8"	7/16"	1
C55107	15/16"	15	8"	7/16"	1
C55108	1"	16	8"	7/16"	1
C55109	1-1/8"	18	8"	7/16"	1
C55110	1-1/4"	20	8"	7/16"	1
C55111	1-3/8"	20	8"	7/16"	1
C55112	1-1/2"	24	8"	7/16"	1

- ◆ 6" Twist Length
- ◆ Heat Treated
- ◆ Machine Ground Hollows
- ◆ Deep Throat
- ◆ Single Twist
- ◆ Single Cutter
- ◆ Side Lip
- ◆ Self-Feeding Screw Point

- Bulk Heads
- General Timber



ALL SHIP AUGER DRILL BITS ARE SOLD INDIVIDUALLY.



18" Long Ship Auger Wood Drill

Part #	Size	Size In 16ths	OAL	Hex Shank	Qty.
C55150	3/8"	6	18"	5/16"	1
C55151	7/16"	7	18"	5/16"	1
C55152	1/2"	8	18"	5/16"	1
C55153	9/16"	9	18"	7/16"	1
C55154	5/8"	10	18"	7/16"	1
C55155	11/16"	11	18"	7/16"	1
C55156	3/4"	12	18"	7/16"	1
C55157	13/16"	13	18"	7/16"	1
C55158	7/8"	14	18"	7/16"	1
C55159	15/16"	15	18"	7/16"	1
C55160	1"	16	18"	7/16"	1
C55161	1-1/8"	18	18"	7/16"	1
C55162	1-1/4"	20	18"	7/16"	1
C55163	1-3/8"	22	18"	7/16"	1
C55164	1-1/2"	24	18"	7/16"	1

- ◆ 12" Twist Length
- ◆ Heat Treated
- ◆ Machine Ground Hollows
- ◆ Deep Throat
- ◆ Single Twist
- ◆ Single Cutter
- ◆ Side Lip
- ◆ Self-Feeding Screw Point

- Bulk Heads
- General Timber



ALL SHIP AUGER DRILL BITS ARE SOLD INDIVIDUALLY.

Made Of Premium Steel, Ship Auger Drills Are For Boring Bulkheads And General Timber.

PERFECT FOR
BATHROOM FIXTURE
INSTALLATIONS.



V Groove Tile Bit - Bulk Packs of 25

PART#	DESCRIPTION	DRILLING	SHANK	LIST
C90102	1/8" X 3" V Groove*	2"	1/8"	\$188.25
C90103	3/16" X 3" V Groove	2"	3/16"	\$188.25
C90104	3/16" X 4" V Groove	2-3/4"	3/16"	\$221.25
C90106	3/16" X 6" V Groove*	4-1/4"	3/16"	\$231.00
C90105	1/4" X 4" V Groove	2-3/4"	1/4"	\$222.50
C90107	1/4" X 6" V Groove*	4-1/4"	1/4"	\$283.25
C90108	5/16" X 6" V Groove*	4-1/4"	5/16"	\$362.25

* SPECIAL ORDER ONLY - MINIMUMS APPLY



- Porcelain
- Ceramic
- Granite
- Marble



Fast Drilling
Speeds and
Water is
Recommended.



- ◆ General Purpose
- ◆ Tungsten Carbide
- ◆ Slow Spiral Flute
- ◆ Tempered Body
- ◆ Black Oxide Finish
- ◆ Gold Head
- ◆ Straight Shank
- ◆ ANSI Specification

- **Brick**
- **Drywall**
- **Clay Pipe**
- **Tile**
- **Slate**
- **Cinder Block**



**Use with rotation or
Percussion**

A first generation carbide tipped drill bit, mass produced since the early 1970's, first in Europe, then in Puerto Rico, then in the USA. Still used ubiquitously and found in anchor kits all over the world.

Slow Spiral Masonry Drills

Part #	Size	X	OAL	Shank	Qty.
C11010	1/8"	X	3"	1/8"	1
C11030	3/16"	X	4"	3/16"	1
C11040	3/16"	X	6"	3/16"	1
C11041	7/32"	X	4"	7/32"	1
C11050	1/4"	X	4"	1/4"	1
C11060	1/4"	X	6"	1/4"	1
C11061	1/4"	X	12"	1/4"	1
C11062	1/4"	X	18"	1/4"	1
C11063	5/16"	X	4"	1/4"	1
C11070	5/16"	X	6"	1/4"	1
C11071	5/16"	X	12"	1/4"	1
C11072	5/16"	X	18"	5/16"	1
C11073	3/8"	X	4"	1/4"	1
C11080	3/8"	X	6"	3/8"	1
C11081	3/8"	X	12"	3/8"	1
C11082	3/8"	X	18"	3/8"	1
C11083	3/8"	X	24"	3/8"	1
C11084	7/16"	X	6"	1/4"	1
C11085	1/2"	X	4"	1/4"	1
C11090	1/2"	X	6"	3/8"	1
C11091	1/2"	X	12"	3/8"	1
C11092	1/2"	X	18"	3/8"	1
C11093	9/16"	X	6"	3/8"	1
C11094	5/8"	X	6"	3/8"	1
C11095	5/8"	X	12"	3/8"	1
C11096	5/8"	X	18"	3/8"	1
C11097	3/4"	X	6"	1/2"	1
C11098	3/4"	X	12"	1/2"	1
C11099	3/4"	X	18"	1/2"	1
C11100	7/8"	X	6"	1/2"	1
C11101	7/8"	X	12"	1/2"	1
C11102	7/8"	X	18"	1/2"	1
C11103	1"	X	6"	1/2"	1
C11104	1"	X	12"	1/2"	1
C11105	1"	X	18"	1/2"	1



SDS-PLUS Rotary Hammer Drills

Part #	Size	X	OAL	Drilling	Head	Qty.
C10009	5/32"	X	4-1/4"	2"	4-PLUS	1
C10010	5/32"	X	6-1/4"	4"	4-PLUS	1
C10020	3/16"	X	4-1/2"	2"	4-PLUS	1
C10030	3/16"	X	6-1/2"	4"	4-PLUS	1
C10031	3/16"	X	8-1/2"	6"	4-PLUS	1
C10032	3/16"	X	12-1/2"	10"	4-PLUS	1
C10033	7/32"	X	6-1/2"	4"	4-PLUS	1
C10034	7/32"	X	8-1/2"	6"	4-PLUS	1
C10035	7/32"	X	10-1/2"	8"	4-PLUS	1
C10036	7/32"	X	16"	14"	4-PLUS	1
C10040	1/4"	X	4-1/2"	2"	4-PLUS	1
C10050	1/4"	X	6-1/2"	4"	4-PLUS	1
C10051	1/4"	X	8-1/2"	6"	4-PLUS	1
C10052	1/4"	X	10-1/2"	8"	4-PLUS	1
C10053	1/4"	X	14"	12"	4-PLUS	1
C10054	1/4"	X	16"	14"	4-PLUS	1
C10060	5/16"	X	6-1/2"	4"	4-PLUS	1
C10070	5/16"	X	12-1/2"	10"	4-PLUS	1
C10080	3/8"	X	6-1/2"	4"	4-PLUS	1
C10090	3/8"	X	10-1/2"	8"	4-PLUS	1
C10100	3/8"	X	12-1/2"	10"	4-PLUS	1
C10101	3/8"	X	18"	16"	4-PLUS	1
C10102	3/8"	X	24"	22"	4-PLUS	1
C10110	7/16"	X	6-1/2"	4"	4-PLUS	1
C10111	7/16"	X	12-1/2"	10"	4-PLUS	1
C10120	1/2"	X	6-1/2"	4"	4-PLUS	1
C10130	1/2"	X	10-1/2"	8"	4-PLUS	1
C10140	1/2"	X	12-1/2"	10"	4-PLUS	1
C10141	1/2"	X	18"	16"	4-PLUS	1
C10142	1/2"	X	24"	22"	4-PLUS	1
C10150	9/16"	X	6-1/4"	4"	4-PLUS	1
C10160	9/16"	X	12-1/4"	10"	4-PLUS	1
C10170	5/8"	X	6-1/4"	4"	4-PLUS	1
C10171	5/8"	X	8-1/4"	6"	4-PLUS	1
C10190	5/8"	X	12-1/4"	10"	4-PLUS	1
C10191	5/8"	X	18"	16"	4-PLUS	1
C10192	5/8"	X	24"	22"	4-PLUS	1
C10193	3/4"	X	8"	6"	4-PLUS	1
C10220	3/4"	X	12"	10"	4-PLUS	1
C10221	3/4"	X	18"	16"	4-PLUS	1
C10222	3/4"	X	24"	22"	4-PLUS	1
C10223	7/8"	X	8"	6"	4-PLUS	1
C10230	7/8"	X	10"	8"	4-PLUS	1
C10231	7/8"	X	12"	10"	4-PLUS	1
C10240	1"	X	10"	8"	4-PLUS	1
C10241	1"	X	18"	16"	4-PLUS	1



- ◆ Rotary Hammer Drill
- ◆ Serrated Head Geometry
- ◆ Self Centering Chisel Point
- ◆ ANSI Specification
- ◆ Tungsten Carbide Tip
- ◆ Copper / Silver Brazing
- ◆ Fastest Dust Removal
- ◆ Fastest Drilling Speeds
- ◆ Clean Round Holes
- ◆ Less Vibration
- ◆ Polished Finish
- ◆ Industrial Quality

- Concrete
- Brick
- Stone
- Masonry
- Aggregates

 Available in Contractor Packs



SOLD INDIVIDUALLY.
1 PER CLIP.



- ◆ Rotary Hammer Drill
- ◆ STOP - Lip Prevents Over-Drilling
- ◆ Drill Exact Depth For Drop-In Anchor
- ◆ Less Likely to Hit Rebar
- ◆ ANSI Specification



SDS-PLUS + STOP Rotary Hammer Bit

Part #	Size	Drill Depth	Anchor Size	Qty.
C12100	3/8"	1-1/16"	1/4"	1
C12102	1/2"	13/16"	3/8" Short	1
C12104	1/2"	1-11/16"	3/8"	1
C12106	5/8"	1-3/16"	1/2" Short	1
C12108	5/8"	2-1/16"	1/2"	1

- Concrete
- Brick
- Stone
- Masonry
- Aggregates



Half Flat Shank



Concrete Bits - FOR CONCRETE-SCREWS

Part #	Size	x	OAL	Screw	Qty.
R62004	5/32"	X	3-1/2"	12	25
R62005	5/32"	X	4-1/2"	12	25
R62006	5/32"	X	5-1/2"	12	25
R62008	3/16"	X	3-1/2"	14	25
R62003	3/16"	X	4-1/2"	14	25
R62001	3/16"	X	5-1/2"	14	25
R62002	3/16"	X	6-3/4"	14	25
R62009	3/16"	X	7-5/8"	14	25

- ◆ Industrial Quality
- ◆ Tungsten Carbide Tip
- ◆ Used for 5/32" Screws and 3/16" Screws

FOR USE WITH CONCRETE-SCREW SLEEVE

Each concrete-screw carbide drill bit is precisely ground to match a certain tolerance to assure proper hole diameter and to achieve maximum thread holding power. The flat on the shank fits all drill adapters. The drill bit is specially heat treated to make it very durable.



SDS-HEX Bits - FOR CONCRETE-SCREWS

Part #	Size	x	OAL	Drilling	Qty.
C19200	5/32"	X	5"	2-1/2"	1
C19201	5/32"	X	7"	4-1/2"	1
C19100	3/16"	X	5"	2-1/2"	1
C19101	3/16"	X	7"	4-1/2"	1



- ◆ Industrial Quality
- ◆ Special Tungsten Carbide Tip
- ◆ Copper / Silver Brazing
- ◆ Polished Finish
- ◆ Used for 5/32" Screws and 3/16" Screws

FOR USE WITH CONCRETE-SCREW SLEEVE

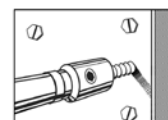
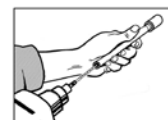
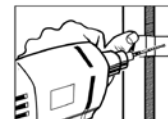
SDS-HEX Rotary Hammer drill bits are specifically designed for concrete-screw installation. These SDS bits have a special 5/16" HEX shoulder for direct use with concrete screw installation sleeves, eliminating the need for drill adapters. The benefit of using an SDS-Plus machine instead of a standard rotation drill is 2-3X faster performance, especially in harder concretes. **SEE BELOW FOR INSTALLATION KIT**

Installation Kit

Part #	Description
C99010	Installation Kit

INCLUDES:

- 5/32" x 7" SDS-PLUS Hex Bit
- 3/16" x 7" SDS-PLUS Hex Bit
- 1/4" Magnetic Driver
- 5/16" Magnetic Driver
- Phillips Bit Adapter
- Masonry Drill Adapter
- 6-1/2" Sleeve
- 1/8" Hex Key
- Phillips #2 x 1" Insert
- Phillips #3 x 1" Insert



- ◆ Red Case
- ◆ Black Hardware

This Installation Kit is Suitable for both Standard Concrete Bits & SDS-HEX Rotary Hammer Bits.



SDS-MAX® Rotary Hammer Drills



Part #	Size	X	OAL	Drilling	Head	Qty.
C13100	3/8"	X	13"	7-1/2"	REGULAR	1
C13102	1/2"	X	13"	7-1/2"	REGULAR	1
C13104	1/2"	X	21"	15-1/2"	REGULAR	1
C13106	9/16"	X	21"	15-1/2"	REGULAR	1
C13108	5/8"	X	13"	7-1/2"	X-CUTTER	1
C13110	5/8"	X	21"	15-1/2"	X-CUTTER	1
C13112	5/8"	X	36"	30-1/2"	X-CUTTER	1
C13114	11/16"	X	21"	15-1/2"	X-CUTTER	1
C13116	3/4"	X	13"	8"	X-CUTTER	1
C13118	3/4"	X	21"	17"	X-CUTTER	1
C13120	3/4"	X	36"	31"	X-CUTTER	1
C13122	7/8"	X	13"	8"	X-CUTTER	1
C13124	7/8"	X	21"	17"	X-CUTTER	1
C13126	7/8"	X	36"	31"	X-CUTTER	1
C13128	1"	X	13"	8"	X-CUTTER	1
C13130	1"	X	21"	17"	X-CUTTER	1
C13132	1"	X	36"	31"	X-CUTTER	1
C13134	1-1/8"	X	17"	12"	X-CUTTER	1
C13136	1-1/8"	X	21"	17"	X-CUTTER	1
C13138	1-1/8"	X	36"	31"	X-CUTTER	1
C13140	1-1/4"	X	15"	10"	X-CUTTER	1
C13142	1-1/4"	X	23"	18"	X-CUTTER	1
C13144	1-3/8"	X	23"	18"	X-CUTTER	1
C13146	1-1/2"	X	23"	18"	X-CUTTER	1
C13148	1-3/4"	X	23"	18"	X-CUTTER	1
C13150	2"	X	23"	18"	X-CUTTER	1

- ◆ Rotary Hammer Drill
- ◆ Industrial Quality
- ◆ Tungsten Carbide Tip
- ◆ Copper / Silver Brazing
- ◆ Fastest Dust Removal
- ◆ Fastest Drilling Speeds
- ◆ Heat Treated Body
- ◆ Clean Round Holes
- ◆ Less Vibration
- ◆ Polished Finish
- ◆ ANSI Specification

- Reinforced Concrete
- Brick
- Stone
- Masonry
- Aggregates



SOLD INDIVIDUALLY.
1 PER TUBE.

Bosch® License

WILL PENETRATE THROUGH REINFORCED CONCRETE





- ◆ Made In USA
- ◆ 1/2" Universal Shank
- ◆ Milled Teeth
- ◆ Matrix II Cutting Edge
- ◆ Tooth Hardness Rc 65-67
- ◆ 8% Cobalt
- ◆ Vacuum Heat Treatment
- ◆ Long Life
- ◆ Shock Resistant Teeth
- ◆ High Edge Hardness
- ◆ High Heat Resistance
- ◆ High Wear Resistance
- ◆ Greater Rigidity
- ◆ Resists Tooth Strippage
- ◆ Accepts Higher Feed Pressure

Available in Contractor Packs



All Purpose Reciprocating Blades - Bi-Metal

Part #	Blade Length	Teeth Per Inch	Pack Description	Width / Length	Qty.
C60100	6"	6T	WOOD & NAIL SLOPE	3/4" x 6" x .050	5
C60101	9"	6T	WOOD & NAIL	3/4" x 9" x .050	5
C60102	12"	6T	WOOD & NAIL	3/4" x 12" x .050	5
C60103	6"	14T	METAL	3/4" x 6" x .035	5
C60104	6"	18T	METAL	3/4" x 6" x .035	5
C60105	6"	24T	METAL	3/4" x 6" x .035	5
C60106	8"	10T	METAL	3/4" x 8" x .035	5
C60107	8"	14T	METAL	3/4" x 8" x .035	5
C60108	8"	18T	METAL	3/4" x 8" x .035	5
C60109	12"	18T	METAL	3/4" x 12" x .035	5

◆ For all 1/4" Hex Insert Bits



Bit Holders - Stainless Steel - Magnetic

Part #	OAL	Body Dia.	Retaining Ring	Description	Qty.
T14100	3"	7/16"	YES	1PC. CONSTRUCTION	1

Part #	OAL	Body Dia.	Retaining Ring	Description	Qty.
T14101	4"	7/16"	YES	1PC. CONSTRUCTION	1

Part #	OAL	Body Dia.	Retaining Ring	Description	Qty.
T14102	6"	7/16"	YES	1PC. CONSTRUCTION	1



Lag Driver / Ceiling Tile Hanger Driver

Part #	Size	Type	Qty.
T51107	7/16" X 2-3/16"	LAG DRIVER WITH SLEEVE	10

- ◆ S2 Modified Steel
- ◆ Rc. 58-62 Heat Treated
- ◆ German Grade Steel



Phillips® Bits - 1/4" Hex Shank

Part #	Size	OAL	Type	Qty.
T50002	#1 X 1"		PHILLIPS INSERT	25
T50009	#1 X 2"		PHILLIPS POWER	25
T50100	#1 X 6"		PHILLIPS POWER	25
T50003	#2 X 1"		PHILLIPS INSERT	25
T50010	#2 X 2"		PHILLIPS POWER	25
T50101	#2 X 6"		PHILLIPS POWER	25
T50004	#3 X 1"		PHILLIPS INSERT	25
T50011	#3 X 2"		PHILLIPS POWER	25
T50102	#3 X 6"		PHILLIPS POWER	25



Star Insert Bits - 1/4" Hex Shank

Part #	Size	OAL	Type	Qty.
T58100	T6 X 1"		STAR INSERT	25
T58101	T7 X 1"		STAR INSERT	25
T58102	T8 X 1"		STAR INSERT	25
T58103	T9 X 1"		STAR INSERT	25
T58104	T10 X 1"		STAR INSERT	25
T58105	T15 X 1"		STAR INSERT	25
T58106	T20 X 1"		STAR INSERT	25
T58107	T25 X 1"		STAR INSERT	25
T58108	T27 X 1"		STAR INSERT	25
T58109	T30 X 1"		STAR INSERT	25
T58110	T40 X 1"		STAR INSERT	25
T58111	T10 X 2"		STAR POWER	25
T58112	T15 X 2"		STAR POWER	25
T58113	T20 X 2"		STAR POWER	25
T58114	T25 X 2"		STAR POWER	25
T58115	T27 X 2"		STAR POWER	25
T58116	T30 X 2"		STAR POWER	25
T58117	T40 X 2"		STAR POWER	25



Phillips® Stopper - 1/4" Hex Shank

Part #	Size	OAL	Type	Qty.
T50103	#2 X 1"		PHILLIPS STOPPER	25



Square Power Bits - 1/4" Hex Shank

Part #	Size	OAL	Type	Qty.
T59100	#1 X 1"		SQUARE INSERT	25
T59101	#1 X 2"		SQUARE POWER	25
T59102	#1 X 6"		SQUARE POWER	25
T59103	#2 X 1"		SQUARE INSERT	25
T59104	#2 X 2"		SQUARE POWER	25
T59105	#2 X 6"		SQUARE POWER	25
T59106	#3 X 1"		SQUARE INSERT	25
T59107	#3 X 2"		SQUARE POWER	25
T59108	#3 X 6"		SQUARE POWER	25



Hex Insert Bits - 1/4" Hex Shank

Part #	Size	OAL	Type	Qty.
T12100	5/64" X 1"		HEX INSERT	25
T12101	3/32" X 1"		HEX INSERT	25
T12102	7/64" X 1"		HEX INSERT	25
T12103	1/8" X 1"		HEX INSERT	25
T12104	5/32" X 1"		HEX INSERT	25
T12105	3/16" X 1"		HEX INSERT	25

- ◆ S2 Modified Steel
- ◆ Rc. 58-62 Heat Treated
- ◆ German Grade Steel



Spanner Insert Bits - 1/4" Hex Shank

Part #	Size	OAL	Type	Qty.
T13100	#6 X 1"		SPANNER	25
T13101	#8 X 1"		SPANNER	25
T13102	#10 X 1"		SPANNER	25
T13103	#12 X 1"		SPANNER	25
T13104	#14 X 1"		SPANNER	25



Hex Tamper Insert Bits - 1/4" Hex

Part #	Size	OAL	Type	Qty.
T13300	3/32" X 1"		HEX TAMPER	25
T13301	1/8" X 1"		HEX TAMPER	25
T13302	9/64" X 1"		HEX TAMPER	25
T13303	5/32" X 1"		HEX TAMPER	25
T13304	3/16" X 1"		HEX TAMPER	25
T13305	7/32" X 1"		HEX TAMPER	25
T13306	1/4" X 1"		HEX TAMPER	25
T13307	5/16" X 1"		HEX TAMPER	25



Star Tamper Insert Bits - 1/4" Hex

Part #	Size	OAL	Type	Qty.
T13200	T8 X 1"		STAR TAMPER	25
T13201	T9 X 1"		STAR TAMPER	25
T13202	T10 X 1"		STAR TAMPER	25
T13203	T15 X 1"		STAR TAMPER	25
T13204	T20 X 1"		STAR TAMPER	25
T13205	T25 X 1"		STAR TAMPER	25
T13206	T27 X 1"		STAR TAMPER	25
T13207	T30 X 1"		STAR TAMPER	25
T13208	T40 X 1"		STAR TAMPER	25



Tri-Wing Tamper Insert Bits - 1/4" Hex

Part #	Size	OAL	Type	Qty.
T13400	#1 X 1"		TRI-WING	25
T13401	#2 X 1"		TRI-WING	25
T13402	#3 X 1"		TRI-WING	25



Phillips® Tamper Insert Bits - 1/4" Hex

Part #	Size	OAL	Type	Qty.
T13500	#2 X 1"		PHILLIPS TAMPER	25
T13501	#3 X 1"		PHILLIPS TAMPER	25

Nut Setters - Magnetic Impact Protection

Part #	Hex Head Size	X	OAL	Type	Qty.
T51200	1/4"	X	1-3/4"	MAGNETIC IMPACT	10
T51201	1/4"	X	2-9/16"	MAGNETIC IMPACT	10
T51202	1/4"	X	4"	MAGNETIC IMPACT	5
T51203	1/4"	X	6"	MAGNETIC IMPACT	5
T51204	5/16"	X	1-3/4"	MAGNETIC IMPACT	10
T51205	5/16"	X	2-9/16"	MAGNETIC IMPACT	10
T51206	5/16"	X	4"	MAGNETIC IMPACT	5
T51207	5/16"	X	6"	MAGNETIC IMPACT	5
T51208	3/8"	X	1-3/4"	MAGNETIC IMPACT	10
T51209	3/8"	X	2-9/16"	MAGNETIC IMPACT	10
T51210	3/8"	X	4"	MAGNETIC IMPACT	5
T51211	3/8"	X	6"	MAGNETIC IMPACT	5

- ◆ Made for Powerful Impact Drivers / Wrenches
- ◆ 1pc Construction
- ◆ Industrial Grade Magnet
- ◆ 1/4" Hex Power Shank



1-3/4" Long



2-9/16" Long



4" Long

Nut Setters - Magnetic (Standard)

Part #	Hex Head Size	X	OAL	Type	Qty.
T51003	1/4"	X	1-3/4"	MAGNETIC	10
T51100	1/4"	X	2-9/16"	MAGNETIC	10
T51303	1/4"	X	4"	MAGNETIC	5
T51005	5/16"	X	1-3/4"	MAGNETIC	10
T51101	5/16"	X	2-9/16"	MAGNETIC	10
T51305	5/16"	X	4"	MAGNETIC	5
T51006	3/8"	X	1-3/4"	MAGNETIC	10
T51102	3/8"	X	2-1/8"	MAGNETIC	10
T51103	3/8"	X	2-9/16"	MAGNETIC	10
T51306	3/8"	X	4"	MAGNETIC	5
T51104	7/16"	X	1-3/4"	MAGNETIC	5
T51105	7/16"	X	2-9/16"	MAGNETIC	5
T51008	1/2"	X	1-3/4"	MAGNETIC	5
T51106	1/2"	X	2-9/16"	MAGNETIC	5

- ◆ 1pc Construction
- ◆ Industrial Grade Magnet
- ◆ 1/4" Hex Power Shank



1-3/4" Long



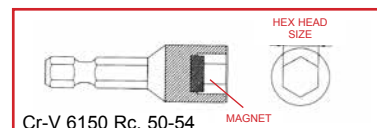
2-1/8" Long



2-9/16" Long



4" Long



Proffered®

CUTTING TOOLS AND ACCESSORIES



**BRIGHTON-BEST
INTERNATIONAL**



Global Headquarters

Tainan, Taiwan
No.122, Yi-Lin Road,
Rende Township.
Tainan, 71752 Taiwan
Tel. 886-6-270-1756

USA Headquarters

Long Beach, California
5855 Obispo Ave.
Long Beach, CA 90805
Tel. 562-808-8000
Fax: 562-808-8137

U.S.A.

Atlanta, GA
250 Horizon Dr.
Suwanee, GA 30024
Tel. 678-459-3700
Fax: 678-459-3720
WATS: 800-275-0056
atlanta@brightonbest.com

Boston, MA
928 West Chestnut St.
Brockton MA 02301
Tel. 508-857-2808
Fax: 774-296-8685
WATS: 800-275-0037
boston@brightonbest.com

Charlotte, NC
1810 West Pointe Dr., Unit A
Charlotte, NC 28214
Tel. 704-393-6711
Fax: 704-393-6715
WATS: 800-275-0050
charlotte@brightonbest.com

Chicago, IL
940 North Enterprise St.
Aurora, IL 60504
Tel. 630-898-9600
Fax: 630-898-9601
WATS: 800-929-2378
chicago@brightonbest.com

Cleveland, OH
21855 Commerce Pkwy.
Strongsville, OH 44149
Tel. 440-238-1350
Fax: 440-238-2336
WATS: 800-275-0048
cleveland@brightonbest.com

Dallas, TX
3225 Roy Orr Blvd., Ste. 200
Grand Prairie, TX 75050
Tel. 972-790-1201
Fax: 972-790-6265
WATS: 800-275-0054
dallas@brightonbest.com

Denver, CO
9700 E. 56th Ave., Unit 120
Denver, CO 80238
Tel. 303-576-0530
Fax: 303-371-9775
WATS: 800-935-2202
denver@brightonbest.com

Detroit, MI
6060 Stoney View Dr., Ste. 100
Shelby Township, MI 48316
Tel. 586-412-3350
Fax: 586-412-3305
WATS: 800-275-0046
detroit@brightonbest.com

Houston, TX
6911 Fairbanks N. Houston Rd. Ste. 150
Houston, TX 77040
Tel: 713-466-0336
Fax: 713-466-0385
WATS: 800-275-0054
houston@brightonbest.com

Logan Township, NJ
2100 Center Square Rd. Ste. 100
Logan Township, NJ 08085
Tel. 856-241-9494
Fax: 856-241-9477
WATS: 800-935-2378
logan@brightonbest.com

Los Angeles, CA
12801 Leffingwell Ave.
Santa Fe Springs, CA 90670
Tel. 562-483-2740
Fax: 562-404-3999
WATS: 800-275-0028
losangeles@brightonbest.com

Miami, FL
3426 West 84th St., Ste. 203
Hialeah, FL 33018
Tel. 305-512-3446
Fax: 305-512-3450
WATS: 800-275-0035
miami@brightonbest.com

Nashville, TN
446 Metroplex Dr., Ste. A120
Nashville, TN 37211
Tel. 615-834-1154
Fax: 615-834-1157
WATS: 800-275-0029
nashville@brightonbest.com

Portland, OR
13440 NE Jarrett St.
Portland, OR 97230
Tel: 503-261-0660
Fax: 503-252-4093
WATS: 800-275-0686
portland@brightonbest.com

Rogers, MN
21010 Commerce Blvd.
Ste. B
Rogers, MN 55374
Tel. 763-425-9464
Fax: 763-425-9266
WATS: 800-275-0031
minnesota@brightonbest.com

Salt Lake City, UT
2179 S. Commerce Center Dr. Ste. 400
West Valley City, UT 84120
Tel: 801-972-1313
Fax: 801-972-5114
WATS: 800-935-1402
saltlake@brightonbest.com

Sayreville, NJ
200 Kennedy Dr.
Sayreville, NJ. 08872
Tel. 732-525-8400
Fax: 732-525-8408
sayreville@brightonbest.com

Seattle, WA
20308 59th Place South, Bldg. 1A
Kent, WA, 98032
Tel. 253-872-3417
Fax: 253-872-3415
WATS: 800-935-1502
seattle@brightonbest.com

St. Louis, MO
1856 Craig Rd.
St. Louis, MO 63146
Tel. 314-205-8001
Fax: 314-205-0857
WATS: 800-275-0047
stlouis@brightonbest.com

Tampa, FL
4915 Distribution Dr.
Tampa, FL 33605
Tel. 305-512-3446
Fax: 305-512-3450
WATS: 800-275-0035
tampa@brightonbest.com

CANADA

Montreal, Québec
12000 Cavendish
Saint-Laurent, Québec H4R 1Y2
Tel: 514-336-9888
Fax: 514-336-8865
WATS: 800-361-2076
montreal@brightonbest.com

Toronto, Ontario
7900 Goreway Dr., Unit 1
Brampton, Ontario L6T 5W6
Tel: 905-791-2000
Fax: 905-791-6841
WATS: 800-268-6918
toronto@brightonbest.com

Vancouver, British Columbia
9489 200 St, Unit 103&104
Langley, B.C. V1M 3A7
Tel: 604-513-0311
Fax: 604-513-0312
WATS: 800-663-9106
vancouver@brightonbest.com

MEXICO

Mexico
Toll Free: 1(855)-816-9726
Fax: 562-404-3999
mexico@brightonbest.com

AUSTRALIA

Brisbane, Queensland
11 Stradbroke St.
Heathwood, Queensland 4110
Tel. 617-3727-5700
Fax: 617-3714-9821
qldsales@brightonbest.com.au

Melbourne, Victoria
31-33 Canterbury Rd.
Braeside, VIC 3195
Tel. 613-8586-0244
Fax: 613-9587-7255
vicsales@brightonbest.com.au

Perth, Western Australia
Unit 3/420 Victoria Rd.
Malaga, Western Australia 6090
Tel. 618-6240-6800
Fax: 618-9248-4766
wasales@brightonbest.com.au

Sydney, New South Wales
1 Wonderland Dr.
Eastern Creek, NSW 2766
Tel. 612-8818-0900
Fax: 612-9620-1050
nswsales@brightonbest.com.au

NEW ZEALAND

Auckland, New Zealand
28B Pavilion Dr. Airport Oaks
Mangere, Auckland 2022
Tel. 649-257-5256
Fax: 649-257-5328
nzsales@brightonbest.co.nz

U.K.

Birmingham, West Midlands
Fastener Complex D1
Cradley Business Park,
Overend Rd., Cradley Heath
West Midlands B64 7DW
Tel. +44 (0) 1384-568144
Fax: +44 (0) 1384-413719
sales@brightonbest.org

BRAZIL

São Paulo, Brazil
Rua Dos Missionários, 410
São Paulo, Brazil 04729-001
Tel. 55 11-5641-4037
Fax: 55 11-5641-2444
luizab@brightonbest.com.br