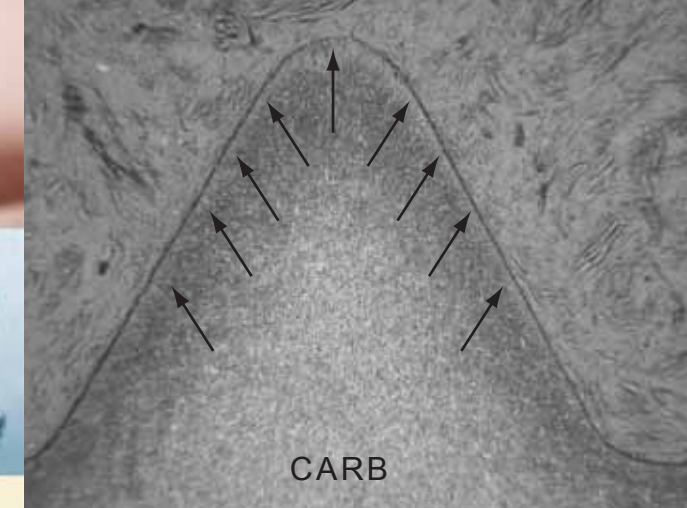


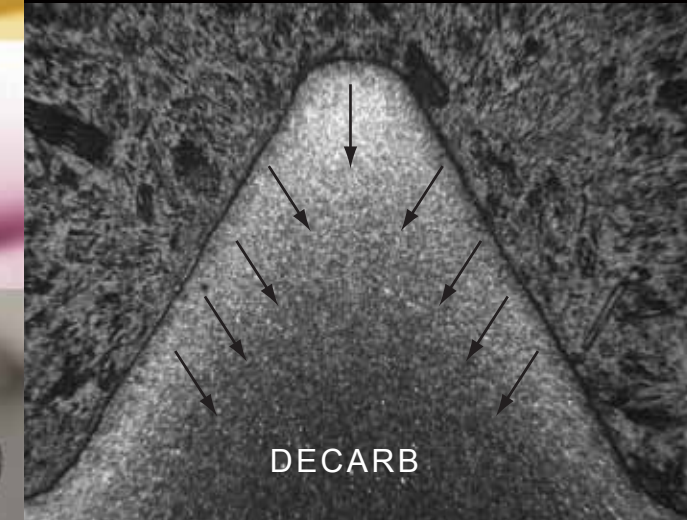
Not all bolts are created equal.

There are many attributes aside from surface appearance that makes one fastener better than another. Starting from the usage of the correct base metal to annealing, forming, thread forming, and heat treating, each process impacts the final integrity and structure of the fastener. YFS is a trusted brand, manufacturing for over 30 years in Taiwan, and sets the standard for quality worldwide.



Heat treating requires the precise level of carbon in the atmosphere to produce the correct hardness within the metal. Too much carbon, and the metal becomes too hard and therefore brittle. Too little carbon, the metal becomes too soft and risks incorrect strength.

We stay up all night so you can sleep well at night.



Through heat treatment, quenching, and tempering, the temperature of the metal needs to be precisely managed to produce the fastener with the correct mechanical and chemical properties.

#1 in customer service

Customer service has always been a part of Brighton-Best's culture and is ingrained in each and every employee at BBI. Our goal is to return a customer's loyalty and commitment through excellent customer service at all levels. At BBI, every order, large or small, is important. We believe that great inventory and pricing can only take a company so far. If you cannot provide world-class customer service and delivery to your customers, they will eventually take their business elsewhere. We strive to build a relationship of trust with every customer:



- The trust that the inventory will be available.
- The trust that the pricing will be most competitive.
- The trust that the product will be delivered when requested.
- The trust that the products are high quality and manufactured by a reputable source.
- The trust that BBI will be around to provide the highest possible level of customer service for the next one hundred years.

TRUST = BBI

**Brighton-Best International
Global Headquarters**
No.122, Yi-Lin Road
Rende Township, Tainan, 71752
Taiwan

**Brighton-Best International
U.S.A. Headquarters**
5855 Obispo Avenue
Long Beach, CA 90805
U.S.A.

Worldwide Branch Locations

USA
www.brightonBEST.com
Atlanta, Georgia
Boston, Massachusetts
Charlotte, North Carolina
Chicago, Illinois
Cincinnati, Ohio
Cleveland, Ohio
Dallas, Texas
Detroit, Michigan
Houston, Texas
Logan Township, New Jersey
Los Angeles, California
Maple Grove, Minnesota
Miami, Florida
Nashville, Tennessee
Portland, Oregon
San Francisco, California

USA
www.brightonBEST.com
Sayreville, New Jersey
Seattle, Washington
St. Louis, Missouri
Tampa, Florida

Canada
www.brightonBEST.com
Edmonton, Alberta
Montreal, Quebec
Toronto, Ontario
Vancouver, British Columbia

Brazil
www.brightonBEST.com.br
São Paulo, Brazil

Australia
www.brightonBEST.com.au
Brisbane, Queensland
Melbourne, Victoria
Perth, West Australia
Sydney, New South Wales

New Zealand
www.brightonBEST.co.nz
Auckland, New Zealand

UK
www.brightonBEST.org
Birmingham, West Midlands



NATIONAL TOLL FREE NUMBERS

U.S.A. 1-800-275-0050 | Australia 1-800-812-527 | New Zealand 0-800-800-961



Simply the BEST



**BRIGHTON-BEST
INTERNATIONAL**



Tested, Tried and True™



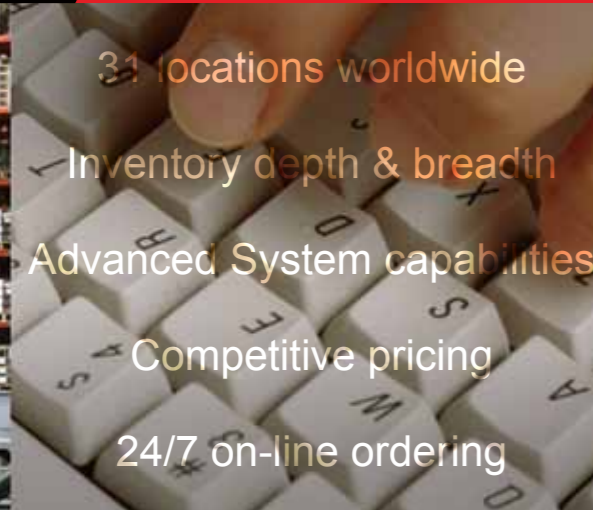
Satisfaction
Expect more



Quality



Service



31 locations worldwide

Inventory depth & breadth

Advanced System capabilities

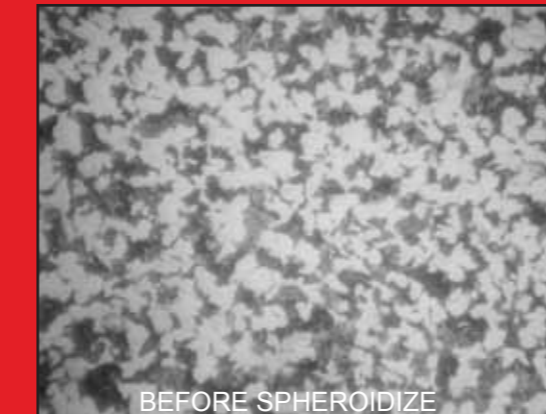
Competitive pricing

24/7 on-line ordering

At BBI and YFS, we do more than what's expected. Our partnership with YFS ensures us that all products sold by BBI are rigidly tested for quality. Our commitment to customer service ensures that our customers will get the right product on time, every time.

You can't judge a book by its cover, just as you can't judge a fastener by its appearance.

Closely controlled annealing processes prepare the material into a "finer" crystalline structure.



BEFORE SPHEROIDIZE

Improper annealing could lead to a more brittle metal which could result in internal cracking within the screw.



AFTER SPHEROIDIZE

Proper annealing requires a controlled level of heat and atmospheric conditions to transform the steel's inner lattice.

What would you rather have holding your products together?

With proper annealing and the correct forming process, the metal flow line in the crystal structure maintains its form. Less frequent changes of the tooling and dies can result in damages inside the point of compression – leading to the possibility of cracks that weaken the internal integrity of the screw.



HEX CAP SCREW
GRAIN FLOW-UNIFORM (GOOD)



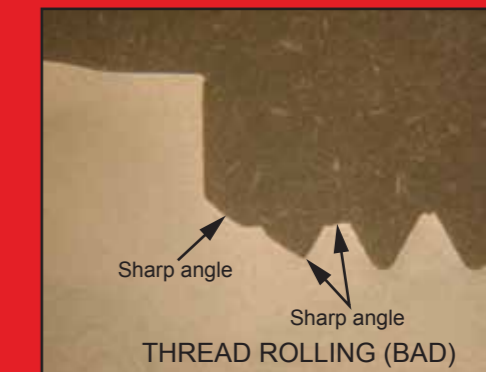
SOCKET HEAD CAP SCREW
GRAIN FLOW-NOT UNIFORM (BAD)



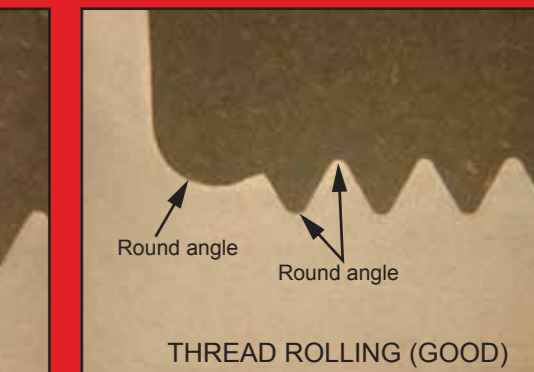
SOCKET HEAD CAP SCREW
GRAIN FLOW-UNIFORM (GOOD)

At BBI, you always get more than you pay for.

Thread plates are closely monitored so that there are no sharp angles at the root or the crest of the threads. The rounded corners and angles provide greater distribution of stress, leading to increased fatigue strength that reduces the risk of fracture.



Sharp angle
Sharp angle
THREAD ROLLING (BAD)



Round angle
Round angle
THREAD ROLLING (GOOD)