



TAPKINGTM HD

CONCRETE SCREW ANCHOR

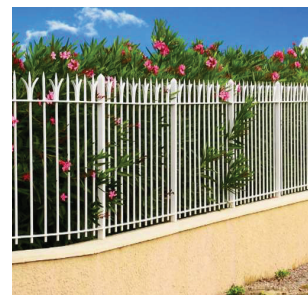
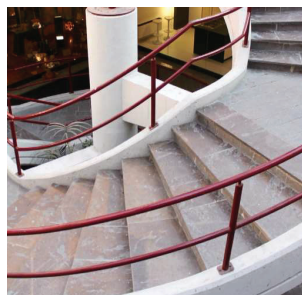
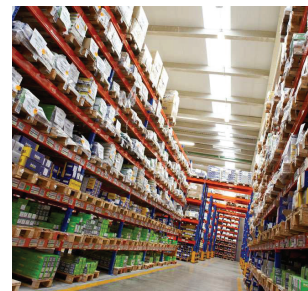
BENEFITS

- Pilot hole required; thread is created by the anchor during the installation process.
- No special drill bit required; install using standard-sized ANSI tolerance drill bits.
- Code listed under IBC/IRC in accordance with ICC-ES AC193 and ACI 355.2 for cracked and uncracked concrete.
- Qualified for static, wind and seismic loading conditions
- Use for heavy duty loads.
- Anchor drill bit / length stamped on head of each anchor.
- Removable, leaving concrete surface flat. Ideal for temporary anchoring (e.g. formwork, bracing) or applications where fixtures may need to be moved.
- Suitable when reduced edge distances or spacing is required.
- Zinc plated coating.
- Triple thread makes installation more stable; patented thread design.
- High characteristic loads in both cracked and uncracked concrete.
- All listed sizes meet **Category 1 Seismic Zone Qualification – Tension Zone – Cracked Concrete.**



APPLICATIONS

- Structural fastenings in cracked and uncracked concrete in indoor conditions
- Formwork and fastening
- Racking and shelving
- Attaching railings, handrails and ledgers
- Fastenings of steel beams, channels, boilers, signals, stadium seatings, façade substructures, etc



BRIGHTON-BEST INTERNATIONAL

www.brightonBEST.com

1 - 8 0 0 - 2 7 5 - 0 0 5 0



WE CARRY A
FULL RANGE
OF SDS PLUS
& MAX
CARBIDE