



TAPKINGTM HD SS

CONCRETE SCREW ANCHOR

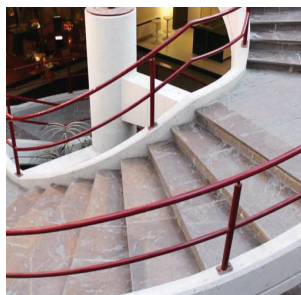
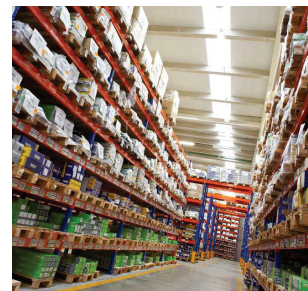
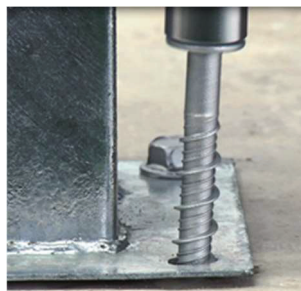
BENEFITS

- Pilot hole required; thread is created by the anchor during the installation process.
- No special drill bit required; install using standard-sized ANSI tolerance drill bits.
- Code listed under IBC/IRC in accordance with ICC-ES AC193 and ACI 355.2 for cracked and uncracked concrete. (1/4" for uncracked concrete only)
- Qualified for static, wind and seismic loading conditions
- Use for heavy duty loads.
- Anchor drill bit / length stamped on head of each anchor.
- Removable, leaving concrete surface flat. Ideal for temporary anchoring (e.g. formwork, bracing) or applications where fixtures may need to be moved.
- Suitable when reduced edge distances or spacing is required.
- 316 Stainless Steel.
- Triple thread makes installation more stable; patented thread design.
- High characteristic loads in both cracked and uncracked concrete.
- 3/8" and 1/2" sizes meet **Seismic Design Categories A through F in cracked and uncracked concrete**, 1/4" meets **Seismic Design Categories A and B only for uncracked concrete**.



APPLICATIONS

- Structural fastenings in cracked and uncracked concrete in indoor and outdoor conditions
- Formwork and fastening
- Racking and shelving
- Attaching railings, handrails and ledgers
- Fastenings of steel beams, channels, boilers, signals, stadium seatings, façade substructures, etc.



**316
STAINLESS
STEEL**



**BRIGHTON-BEST
INTERNATIONAL**

www.brightonBEST.com

1 - 8 0 0 - 2 7 5 - 0 0 5 0

**WE CARRY
A FULL
RANGE OF
SDS PLUS &
MAX CARBIDE
BITS**