

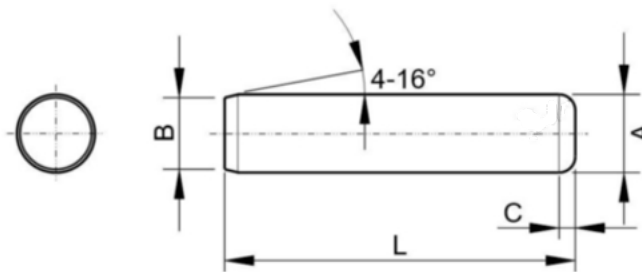


PRODUCT DATA SHEET

USA/CA: brightonBEST.com Europe: brightonBEST.org AU: brightonBEST.com.au NZ: brightonBEST.co.nz Brazil: brightonBEST.com.br

Oversize Series Dowel Pins - Inch Series

1.0 Dimensions: ASME B18.8.2.



Nominal Size or Nominal Pin Diameter	A			B		C
	Oversize Series Pin Diameter			Point Diameter		Crown Height
	Basic	Max	Min	Max	Min	Max
1/8	0.1260	0.1261	0.1259	0.120	0.110	0.041
5/32	0.1572	0.1573	0.1571	0.150	0.140	0.052
3/16	0.1885	0.1886	0.1884	0.180	0.170	0.062
1/4	0.2510	0.2511	0.2509	0.240	0.230	0.083
5/16	0.3135	0.3136	0.3134	0.302	0.290	0.104
3/8	0.3760	0.3761	0.3759	0.365	0.350	0.125
7/16	0.4385	0.4386	0.4384	0.424	0.409	0.146
1/2	0.5010	0.5011	0.5009	0.486	0.471	0.167
5/8	0.6260	0.6261	0.6259	0.611	0.595	0.208
3/4	0.7510	0.7511	0.7509	0.735	0.715	0.250
7/8	0.8760	0.8761	0.8759	0.860	0.840	0.293
1	1.0010	1.0011	1.0009	0.980	0.960	0.333

Hardness: As per manufacturer standard. Through hardened to 58-62 HRC

Surface Finish: Plain