

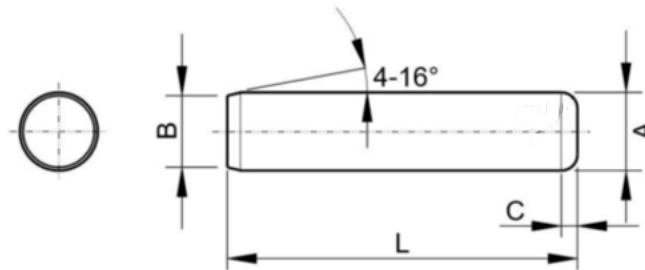


PRODUCT DATA SHEET

USA/CA: brightonBEST.com Europe: brightonBEST.org AU: brightonBEST.com.au NZ: brightonBEST.co.nz Brazil: brightonBEST.com.br

Standard Series Dowel Pins - Inch Series

1.0 Dimensions: As per ASME B18.8.2.



Nominal Size or Nominal Pin Diameter	A			B		C
	Standard Series Pin Diameter			Point Diameter		Crown Height
	Basic	Max	Min	Max	Min	Max
1/16	0.0627	0.0628	0.0626	0.058	0.048	0.020
5/64	0.0783	0.0784	0.0782	0.074	0.064	0.026
3/32	0.0940	0.0941	0.0939	0.089	0.079	0.031
1/8	0.1252	0.1253	0.1251	0.120	0.110	0.041
5/32	0.1564	0.1565	0.1563	0.150	0.140	0.052
3/16	0.1877	0.1878	0.1876	0.180	0.170	0.062
1 / 4	0.2502	0.2503	0.2501	0.240	0.230	0.083
5/16	0.3127	0.3128	0.3126	0.302	0.290	0.104
3/8	0.3752	0.3753	0.3751	0.365	0.350	0.125
7/16	0.4377	0.4378	0.4376	0.424	0.409	0.146
1/2	0.5002	0.5003	0.5001	0.486	0.471	0.167
5/8	0.6252	0.6253	0.6251	0.611	0.595	0.208
3/4	0.7502	0.7503	0.7501	0.735	0.715	0.250
7/8	0.8752	0.8753	0.8751	0.860	0.840	0.293
1	1.0002	1.0003	1.0001	0.980	0.960	0.333

Hardness: As per manufacturer standard. Sizes smaller than 1/8 " : Through hardened to 50-62 HRC. Sizes 1/8 " and above : Through hardened to 58-62 HRC

Surface Finish: Plain

Disclaimer: The above is a compilation of data, from various industry standards. BBI has taken every effort to present the data accurately. However BBI cannot be held liable for any claim traceable to any errors typographical or otherwise contained herein.