



TAPKINGTM HD

CONCRETE SCREW ANCHOR

PATENTED TRIPLE THREAD



BBI#	SIZE	DRILL BIT DIA.	MIN. HOLE DEPTH SHALLOW	MIN. HOLE DEPTH DEEP	NOMINAL EMBEDMENT SHALLOW	NOMINAL EMBEDMENT DEEP	MAX. TORQUE SHALLOW	MAX. TORQUE DEEP	WRENCH SIZE	MAX FIXTURE THICKNESS SHALLOW	MAX FIXTURE THICKNESS DEEP
044103	3/8"x3"	3/8"	2 3/4	-	2 1/2	-	35	-	9/16	1/2	-
044104	3/8"x4"	3/8"	2 3/4	3 1/2	2 1/2	3 1/4	35	50	9/16	1 1/2	3/4
044105	3/8"x5"	3/8"	2 3/4	3 1/2	2 1/2	3 1/4	35	50	9/16	2 1/2	1 3/4
044106	3/8"x6"	3/8"	2 3/4	3 1/2	2 1/2	3 1/4	35	50	9/16	3 1/2	2 3/4
044123	1/2"x4"	1/2"	3 3/8	-	3	-	45	-	3/4	1	-
044124	1/2"x5"	1/2"	3 3/8	4 5/8	3	4 1/4	45	65	3/4	2	3/4
044125	1/2"x6"	1/2"	3 3/8	4 5/8	3	4 1/4	45	65	3/4	3	1 3/4
044126	1/2"x6-1/2"	1/2"	3 3/8	4 5/8	3	4 1/4	45	65	3/4	3 1/2	2 1/4
044127	1/2"x8"	1/2"	3 3/8	4 5/8	3	4 1/4	45	65	3/4	5	3 3/4
044162	5/8"x4"	5/8"	3 5/8	-	3 1/4	-	85	-	15/16	3/4	-
044163	5/8"x5"	5/8"	3 5/8	-	3 1/4	-	85	-	15/16	1 3/4	-
044164	5/8"x6"	5/8"	3 5/8	5 3/8	3 1/4	5	85	100	15/16	2 3/4	1
044165	5/8"x6-1/2"	5/8"	3 5/8	5 3/8	3 1/4	5	85	100	15/16	3 1/4	1 1/2
044166	5/8"x8"	5/8"	3 5/8	5 3/8	3 1/4	5	85	100	15/16	4 3/4	3
044202	3/4"x4-1/2"	3/4"	4 3/8	-	4	-	115	-	1 1/8	1/2	-
044203	3/4"x5"	3/4"	4 3/8	-	4	-	115	-	1 1/8	1	-
044204	3/4"x5-1/2"	3/4"	4 3/8	-	4	-	115	-	1 1/8	1 1/2	-
044205	3/4"x6"	3/4"	4 3/8	-	4	-	115	-	1 1/8	2	-
044206	3/4"x6-1/4"	3/4"	4 3/8	-	4	-	115	-	1 1/8	2 1/4	-
044207	3/4"x7"	3/4"	4 3/8	6 5/8	4	6 1/4	115	150	1 1/8	3	3/4
044208	3/4"x8"	3/4"	4 3/8	6 5/8	4	6 1/4	115	150	1 1/8	4	1 3/4
044209	3/4"x8-1/2"	3/4"	4 3/8	6 5/8	4	6 1/4	115	150	1 1/8	4 1/2	2 1/4
044210	3/4"x10"	3/4"	4 3/8	6 5/8	4	6 1/4	115	150	1 1/8	6	3 3/4



ICC-ES 4557

Cracked & Uncracked Concrete

APPROVED FOR USE IN

Static, Wind, & Seismic

CODE LISTED

IBC/IRC In Accordance with
ICC-ES AC 193 & ACI 355.2

CODE COMPLIANCE

IBC 2021, 2018, 2015, 2013, 2009
IRC 2021, 2018, 2015, 2013, 2009

LABC 2023
LARC 2023
CBC 2022
CRC 2022
FBC 2023



BRIGHTON-BEST INTERNATIONAL

www.brightonBEST.com

1 - 8 0 0 - 2 7 5 - 0 0 5 0

WE CARRY
A FULL
RANGE OF
SDS PLUS &
MAX CARBIDE
BITS



TAPKINGTM HD

CONCRETE SCREW ANCHOR

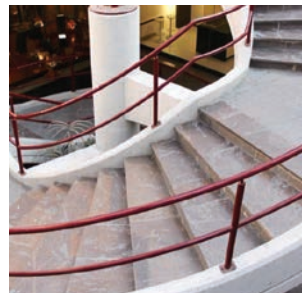
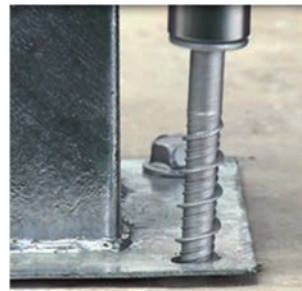
BENEFITS

- Pilot hole required; thread is created by the anchor during the installation process.
- No special drill bit required; install using standard-sized ANSI tolerance drill bits.
- Code listed under IBC/IRC in accordance with ICC-ES AC193 and ACI 355.2 for cracked and uncracked concrete.
- Qualified for static, wind and seismic loading conditions
- Use for heavy duty loads.
- Anchor drill bit / length stamped on head of each anchor.
- Removable, leaving concrete surface flat. Ideal for temporary anchoring (e.g. formwork, bracing) or applications where fixtures may need to be moved.
- Suitable when reduced edge distances or spacing is required.
- Zinc plated coating.
- Triple thread makes installation more stable; patented thread design.
- High characteristic loads in both cracked and uncracked concrete.
- All listed sizes meet all Seismic Design Categories A through F.



APPLICATIONS

- Structural fastenings in cracked and uncracked concrete in indoor conditions
- Formwork and fastening
- Racking and shelving
- Attaching railings, handrails and ledgers
- Fastenings of steel beams, channels, boilers, signals, stadium seatings, façade substructures, etc



BRIGHTON-BEST INTERNATIONAL

www.brightonBEST.com

1 - 8 0 0 - 2 7 5 - 0 0 5 0

WE CARRY
A FULL
RANGE OF
SDS PLUS &
MAX CARBIDE
BITS



TAPKINGTM HD

FREQUENTLY ASKED QUESTIONS

Q. What type of product is Taping HD?

A. Larger diameter concrete screw for heavy duty applications.

Q. How does it work?

A. A pilot hole is drilled into concrete to specific depth followed by the Taping HD screw set via an impact drill.

Q. How does it compare to a standard wedge anchor?

A. The top of the anchor has a hex flange head for a finished profile vs. a wedge anchor which has a threaded profile.

Q. What sets this anchor?

A. The Taping HD has an external triple thread designed to cut into concrete setting the anchor.

Q. Is the Taping HD thread special?

A. Yes! It features a patented "triple thread" profile that makes installation more stable.

Q. Is the Taping HD removable?

A. Yes and reusable for several additional fastenings. ESR does only cover first installation. Further ones are out of the ESR scope.

Q. What type of bits are needed for the Taping HD?

A. Standard A.N.S.I. SDS plus and Max carbide drill bits.

Q. What coatings are available?

A. Zinc coating is standard. Stainless version is pending.

Q. Is the Taping code approved?

A. Yes. ICC-ES ESR #4557, Miami Dade County Pending

Q. Does it cover cracked and un-cracked concrete?

A. Yes with a category 1 rating resulting in higher design resistances. Qualified for static, wind and seismic loading.

Q. Does the Taping HD have length and part identification marks on the head of the anchor?

A. Yes! As required by the codes.

Q. Is the Taping HD approved by the states of California and Florida?

A. Yes and City of Los Angeles. Florida approval requests an additional application. The sense of FBC supplement is to use it as periodic surveillance made by ICC only. Florida approvals can be found in this link https://www.floridabuilding.org/pr/pr_app_srch.aspx where BBI's Taping is not included

Q. Is the Taping HD suitable for reduces edge and spacing requirements?

A. Yes! Less stress is applied through undercutting the concrete vs. wedge anchor method.

Q. What is the size range of the Taping HD?

A. 1/4" through 3/4" diameters with varying lengths up to 10". (1/4" diameter will be added later to line).

Q. Will the Taping HD be available in both package and bulk?

A. Yes.

Q. Is pricing in the system? What is the family code?

A. Yes! Already loaded – Family code # is 44.

Q. What are the ideal applications for the Taping HD screw?

A. Racking – conveyor – loading docks – stadium seating – stairs – fencing – machinery – steel beams – formwork signage – railings and façade fastenings.

Q. What is the significance of this anchor to the US Anchor overall product offering?

A. The Taping HD allows BBI to participate in all heavy duty concrete screw applications and compliments the Taping SD for smaller lighter duty applications.

Q. Will the Taping HD technical data be posted on the BBI Website?

A. Yes! Under certificates.

Q. Is there an introductory sell sheet available?

A. Yes! It will contain features/advantages and benefits along with a chart with basic information to include maximum torque and dimensional / installation data.

Q. Is technical assistance available to answer questions from distributors and users?

A. Yes! Please e-mail us at usanchor@brightonbest.com.